



VISION

T4X-SERIES SMART CAMERA

The new T4x-Series smart camera provides customers with outstanding performance in an industrialized and compact package. Equipped with a powerful 1.1 GHz processor, the T4x-Series performance is exceptional in value and functionality.

The T4x-Series comes in 3 different camera resolutions:

- T40 – 640 x 480 (VGA) resolution
- T47 – 2.0 Mega Pixel resolution
- T49 – 5.0 Mega Pixel resolution

all in a sealed, industrially hardened enclosure for maximum protection.

Combined with Impact software, the new generation T4x-Series delivers the most rugged and versatile smart camera solution in the market today.

HIGHLIGHTS

- IP67 Rated Enclosure with sealed connectors – No bulky ‘add on’ enclosure required for harsh environments
- Three High Quality CCD Resolution Sensor Options – Delivering reliable and stable image quality performance
- Can be run with or without an operator interface – For full turnkey integration capability or stand-alone use
- Complete Impact software toolset for ultimate programming flexibility – Ability to address any inspection and user interface needs through Impact software
- Complete communications support, including RS232 Serial, Ethernet and Discrete I/O – For easy data transfer to any industrial platform
- Real-time operating system – Offers highly deterministic timing for precise output of inspection results

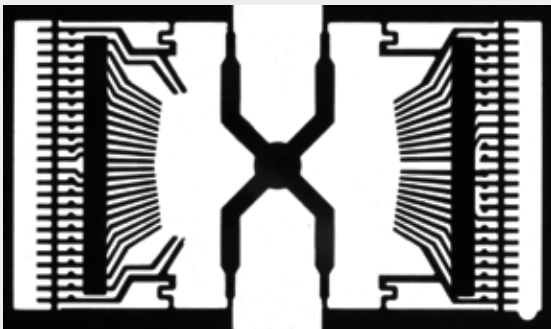
PRODUCT SPECIFICATIONS

| | T40 | T47 | T49 |
|------------------------------------|-------------------------|---|--------------------------|
| Resolution | 640 x 480 CCD | 1600 x 1200 CCD | 2448 x 2050 CCD |
| Pixel size | 7.4 x 7.4 μ m | 4.4 x 4.4 μ m | 3.4 x 3.4 μ m |
| Imager size | 1/3" | 1/1.8" | 2/3" |
| Lens mount | | C-Mount | |
| Frames/sec | 60 | 15 | 15 |
| Processor | | 1.1 GHz TI Da Vinci | |
| Housing | | Right Angle - IP67 | |
| Housing dimensions maximum (LxWxH) | | 123 x 65 x 101 mm (4.84 x 2.55 x 3.98 in) | |
| Dedicated I/O | | 1 In / 1 Out | |
| Configurable I/O | | 1 In / 2 Out | |
| I/O optically isolated | | YES | |
| External button | | YES | |
| Power requirements | 10-30 VDC 1 - 0.33 A | 10-30 VDC 1.05 - 0.35 A | 10-30 VDC 1.2 - 0.4 A |
| RS-232 serial | | YES | |
| Ethernet | | YES | |
| Storage | | 256 MB Flash | |
| RAM | | 512 MB | |
| Operating Temperature | | 0 to 50 °C | |
| Humidity (non-condensing) | | 0 to 90% | |
| Certifications | | CE, CSA | |

APPLICATIONS

Lot Code Verification

The T4x-Series smart camera series provides the right amount of software tools, processing power and sensor resolution to read and verify lot and date codes while being able to survive the harsh wash down environments of production lines. With our OCR software tool and sealed communication connectors, inspection data for product tracking and signaling can be quickly setup and easily transmitted to receiving devices such as PCs, PLCs, control systems, robots and other industrial devices.



Precision Repeating Measurement

Designed with high quality CCD sensors, locating and precision software measurement tools, the T4x-Series smart cameras can improve your efficiency by providing accurate and repeatable gauging data for hundreds of measurements - in only 10ths of a second.

Pattern Finding

The powerful pattern finding algorithm provides robust locating of unique shapes even when there are similar products in the inspection image. Light insensitive and scaling capable, this tool provides incredible results even in noisy images and is included as a standard software tool in the T4x-Series smart camera products.



HMI INTERFACE



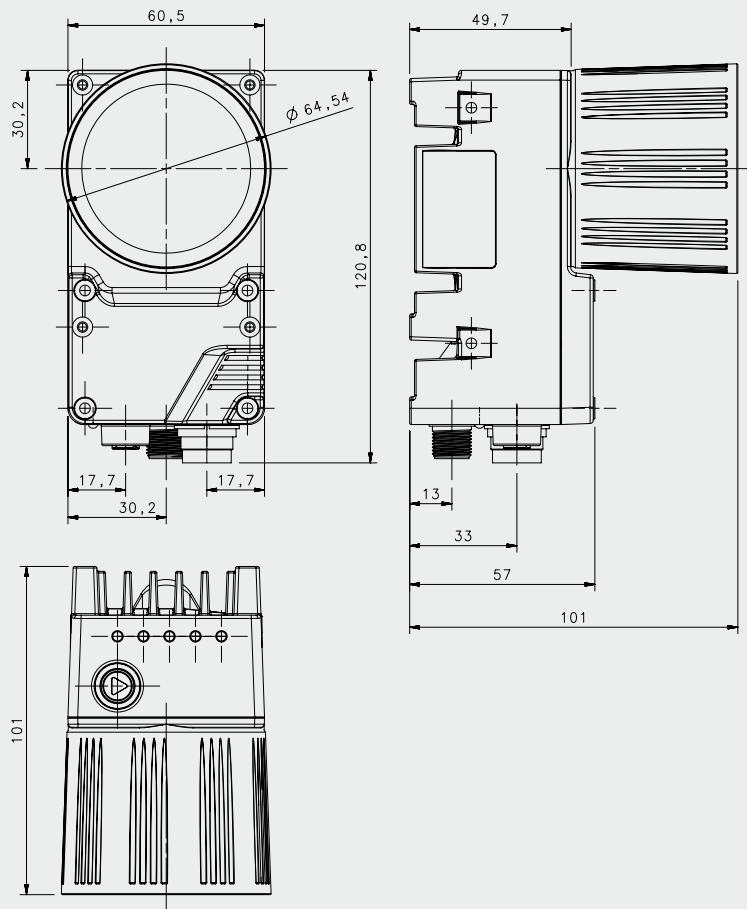
| | | | | | |
|--------------|------|--------|--------|--------|---------|
| LED Color | Red | Yellow | Yellow | Yellow | Green |
| LED Function | Busy | Out 1 | Out 2 | Out 3 | On Line |

CONNECTORS



- A - M16 Male 19 poles (I/O & Power)
- B - M12 Female 8 poles A-Coded (Gigabit Ethernet)
- C - M12 Male 8 poles A-Coded (Not Used)

DIMENSIONS



[mm]

MODEL SELECTION AND ORDER INFORMATION

| MODEL | ORDER N° |
|--------------------------------------|-----------|
| T40, 640 x 480, 60 FPS, 1/3" CCD | 959965001 |
| T47, 1600 x 1200, 15 FPS, 1/1.8" CCD | 959965002 |
| T49, 2448 x 2050, 15 FPS, 2/3" CCD | 959965003 |

ACCESSORY SELECTION AND ORDER INFORMATION

| MODEL | DESCRIPTION | ORDER N° |
|--------------------------------------|---|-----------|
| OCR Software License | OCR software license | 098-0223 |
| CAB-SCS01 Cable, A30/T4x to CBX, 1M | T4x to CBX connection cable - 1 meter | 95A906068 |
| CAB-SCS03 Cable, A30/T4x to CBX, 3M | T4x to CBX connection cable - 3 meters | 95A906069 |
| CAB-SCS05 Cable, A30/T4x to CBX, 5M | T4x to CBX connection cable - 5 meters | 95A906070 |
| CAB-SCS10 Cable, A30/T4x to CBX, 10M | T4x to CBX connection cable - 10 meters | 95A906071 |
| CAB-GE01 M12-IP67 TO RJ45 1M | Gig-E ethernet cable - 1 meter | 93A050034 |
| CAB-GE03 M12-IP67 TO RJ45 3M | Gig-E ethernet cable - 3 meters | 93A050035 |
| CAB-GE05 M12-IP67 TO RJ45 5M | Gig-E ethernet cable - 5 meters | 93A050036 |
| CAB-GE10 M12-IP67 TO RJ45 10M | Gig-E ethernet cable - 10 meters | 93A051389 |
| CBX500 CONNECTION BOX MODULAR | CBX500 connection box | 93A301068 |
| CBX800 GATEWAY | CBX800 connection box | 93A301077 |
| BM300 PROFIBUS MODULE | Profibus module | 93ACC1810 |
| BM310 PROFIBUS IP65 MODULE | Profibus module with IP65 connector | 93ACC1811 |
| BA100 DIN RAIL ADAPTERS | CBX adapter for DIN rail mounting | 93ACC1821 |
| BA200 BOSCH ADAPTERS | CBX adapter for Bosch profile mounting | 93ACC1822 |

Rev. 03, 05/2013



www.datalogic.com

The company endeavours to continuously improve and renew its products; for this reason the technical data and contents of this catalogue may undergo variations without prior notice. For correct installation and use, the company can guarantee only the data indicated in the instruction manual supplied with the products.