

LRS605, LRS608

Designed to replace high power xenon strobes, this affordable LED strobe light can project a beam of light to over 100 feet to illuminate a small target. The Long-Range Strobe Light features a weather proof enclosure. Strobe pulse widths are adjustable from 2 μ s to 250 μ s with pulse rates up to 50kHz. Strobe controls include intensity, strobe rate, trigger delay etc. Integrated mounting hardware is included to assist with installation in virtually any environment.



The LRS can be triggered remotely via a camera's strobe output signal. Our thermal management technology assures an ultra-fast recharge to allow the strobe to fire at rates up to 50kHz for high-speed digital photography or video use. The Long-Range Strobe Light is available in **Narrow** beam, suitable for monitoring one traffic lane at 100 feet or **Wide** beam, suitable for monitoring 4 traffic lanes at 40 feet. Custom beam widths are available.

Applications
• Law Enforcement
• Automatic Number Plate Recognition
• Stop Motion Video
• High Speed Photography
• Night Vision Surveillance

Available Wavelengths		
Color	Code	Wavelength
Red	R	630nm
Green	G	530nm
Blue	B	470nm
Infrared	IR850	850nm
White	W	6000K (nominal)

LRS605, LRS608

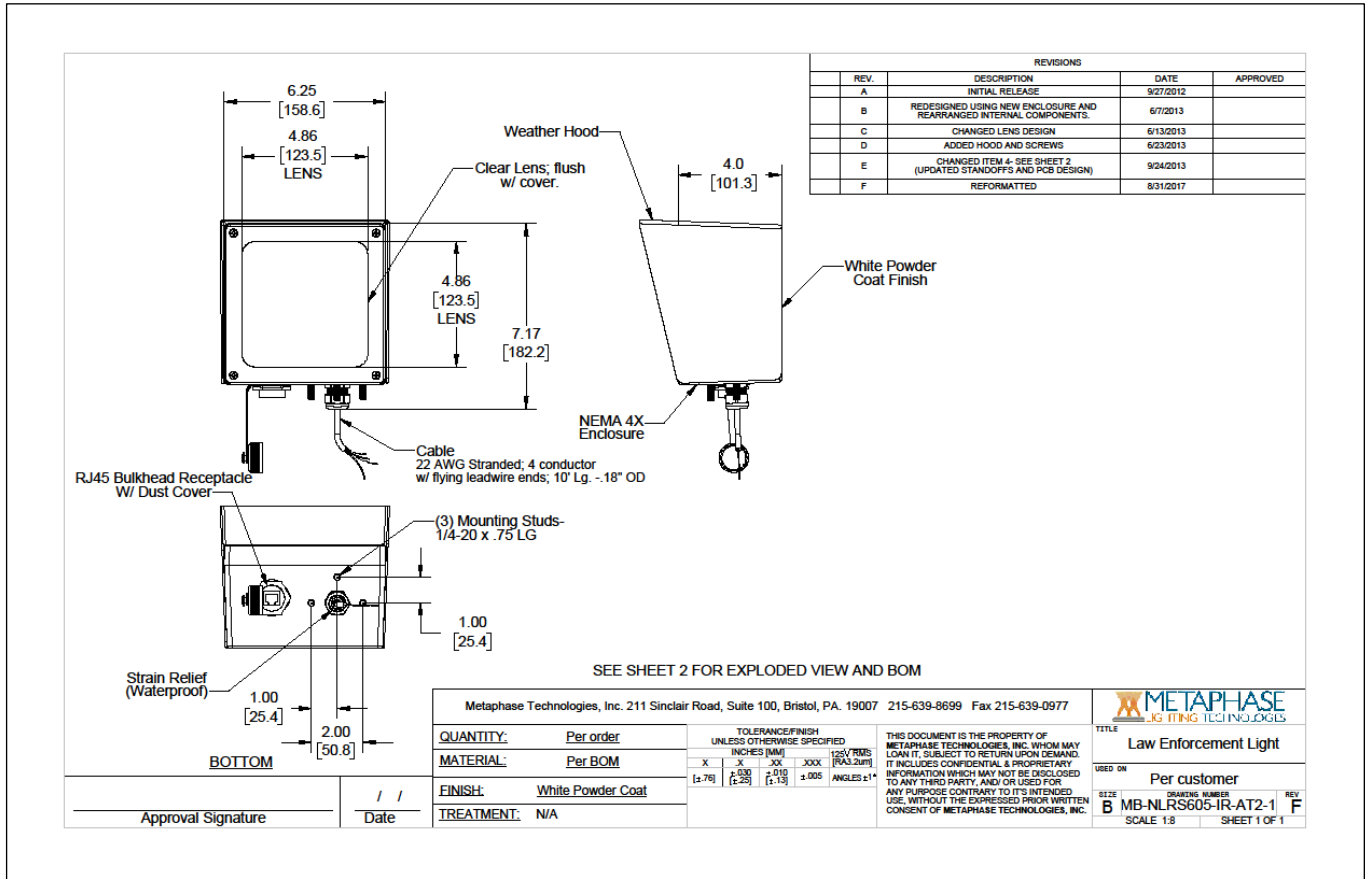
LRS605 Wire Assignment		
Wire Color	Function	Notes
Red	24VDC	4 conductor Cable with flying leads
White	TRIGGER IN (+)	
Black	TRIGGER IN (-)	
Green	Ground (24V RTN)	

LRS608 Pin Assignment		
PIN	Function	Notes
1	RS485 A	Has QTY 2, 8 position M12 type bulkhead connectors (BM12Y) both wired the same for daisy-chaining units together
2	RS485 B	
3	TRIGGER IN (+)	
4	TRIGGER IN (-)	
5	Ground (24V RTN)	
6	24VDC	
7	24VDC	
8	Ground (24V RTN)	

PART NUMBER KEY									
MODEL	SIZE	-	WAVELENGTH	-	DRIVER	-	LENS	-	CABLE LENGTH (605 only)
LRS	XXX	-	XXXXX	-	XX	-	XXX	-	XXX
LRS	605 608		W (White 6000K, Nominal) R (Red 630nm) G (Green 530nm) B (Blue 470nm) IR850 (Infrared 850nm)		24		L12 (Narrow, 12°) L28 (Wide, 28°)		5M 10M Length can be customized: ex.7M=7meters Select or leave blank for 3 meters
Example 1: LRS605-W-24-L12-6M									
Example 2: LRS608-IR850-24-L28									

LRS605, LRS608

Sample Part Number: **LRS605-W-24-L12-6M**



LRS605, LRS608

General Specifications

Supply Voltage	24VDC ±5%, 6 amp switching power supply recommended
Trigger Input:	
Optically Isolated	Yes
Voltage	3V to 24V
Current	7mA typical, 10mA max
Rate	50kHz maximum
Pulsewidth	2us minimum, 250µs maximum
Edge/Polarity	Rising or Falling Edge (Strobe Mode) High or Low Level On (DC Current Mode)
Ethernet Control:	UDP messaging listening on port 5000 for any incoming source port
IP Address	User selectable. Defaults to 172.16.1.1
Operating Modes	Strobe (Pulse), DC Current
ROHS Compliance	Yes
Expected Lifetime	75,000 hours
Mounting	Pelco style swivel base
Operating Temperature	-34°C to 48.8°C (-29°F to 120°F)
Operating Humidity	0% to 85% RH non-condensing
IP Rating	IP66 (NEMA 4X enclosure)

COMPLIANCE



CONTACT US

Contact Metaphase Technologies at **215-639-8699** or your local representative for additional details, options and customizations.