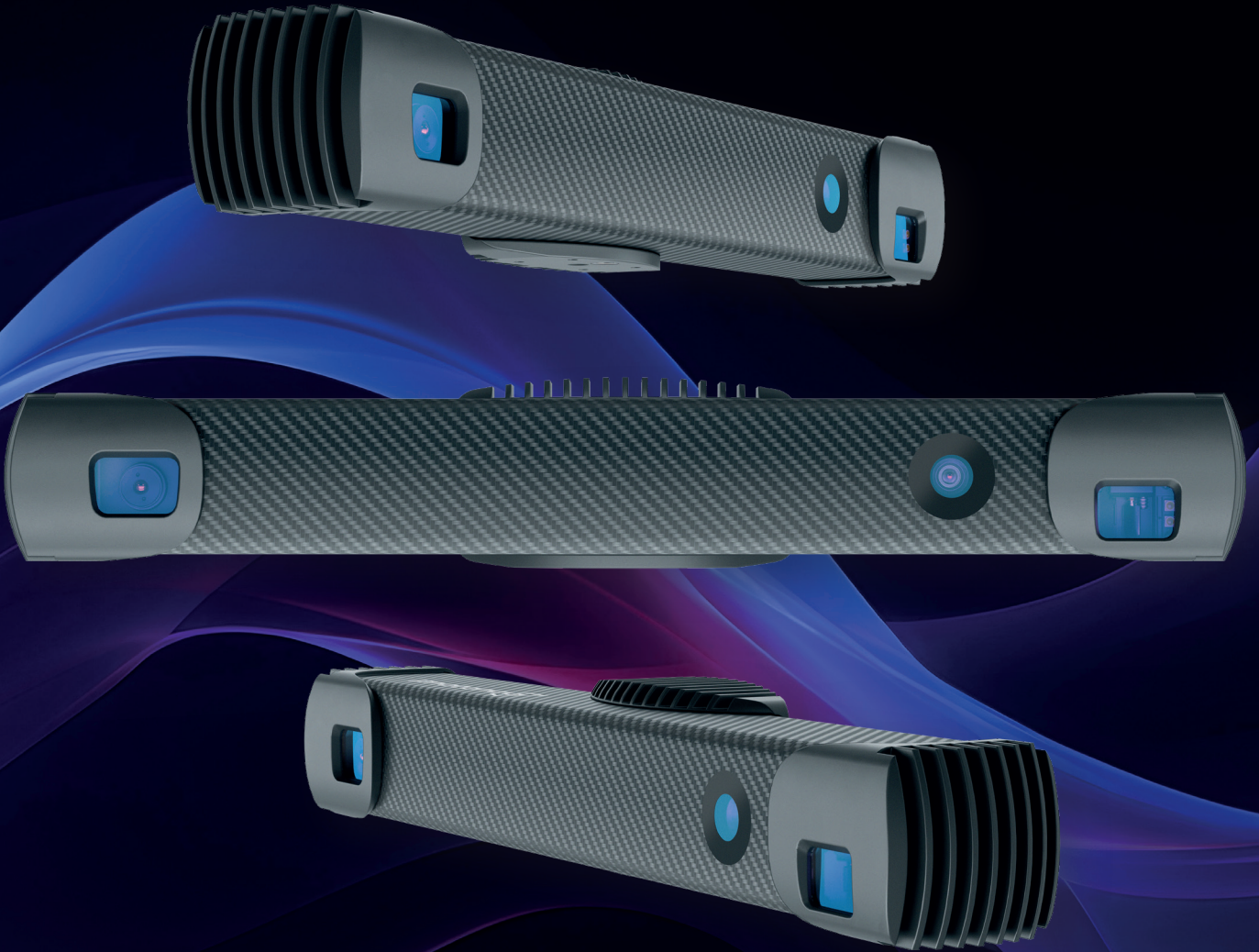




Photoneo
Focused on 3D
NOW PART OF ZEBRA TECHNOLOGIES



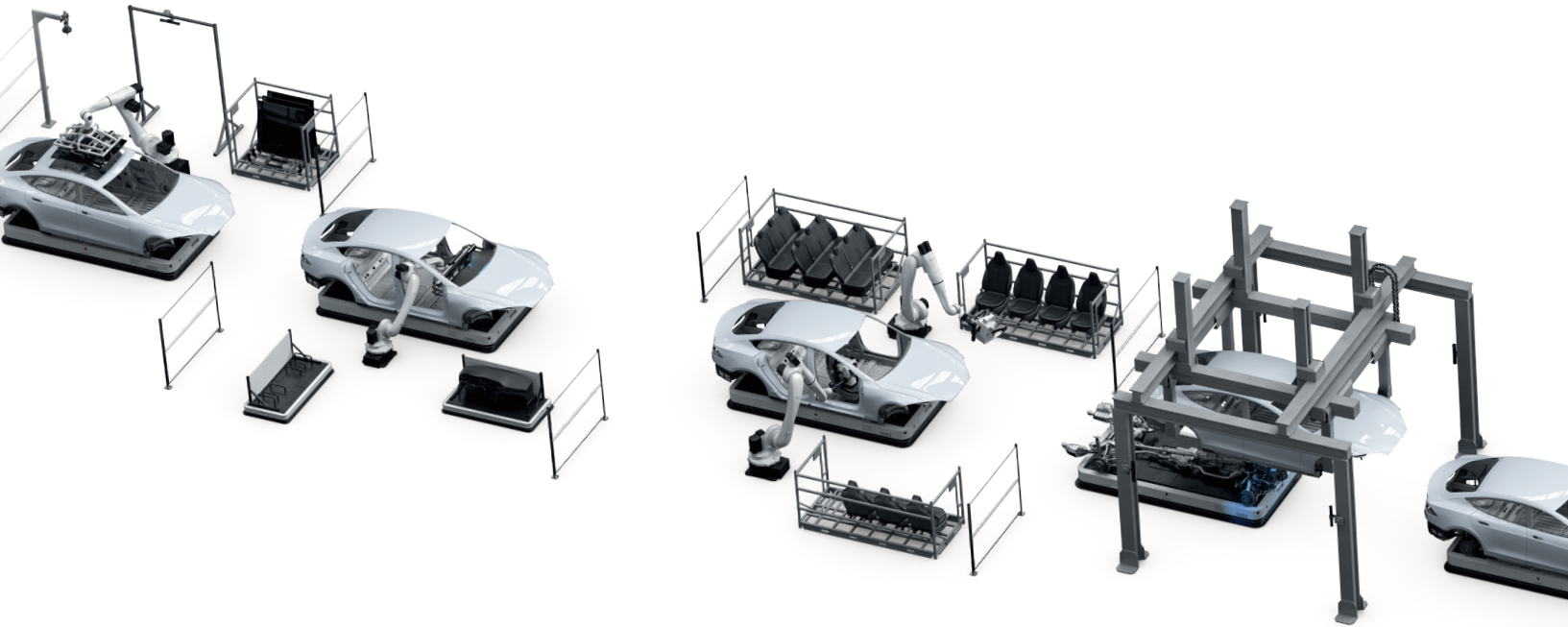
The new

MotionCam-3D Color **(Blue)**

Precise 3D Data in Motion for Time-Critical
Automation & Dynamic Object Handling

www.photoneo.com

Meet the Next Gen with a 50% Leap in 3D Performance



Work Faster

Your applications will work faster — cut exposure time in half while maintaining the same high-quality results.

50% Performance Boost

Crystal-clear 3D data even at the edge of the scanning range — with 50% more performance, speed, and precision at long distances.

Light Resistance

Stay productive in any lighting — capture accurate 3D data even in direct sunlight, so your applications can run uninterrupted.

Pick More

97% of logistics objects are now pickable, thanks to 25% better reconstruction of even transparent and most challenging materials.

Richer Colors

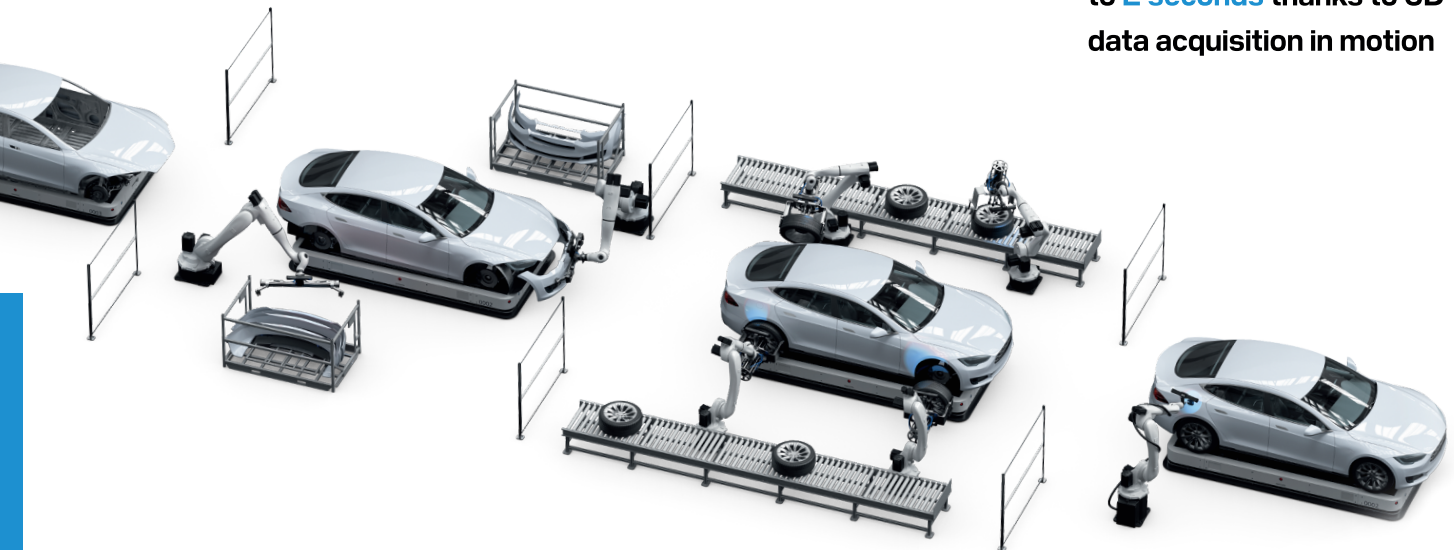
Best-in-class RGB 3D data powers high-accuracy inspection, and digital twinning, ready for seamless AI integration.

Zero Maintenance Downtime

Your applications run without interruptions. Autonomous maintenance of your device with a single click, no manual setup or special marker patterns needed.

Precise 3D Data in Motion

MotionCam-3D Color (Blue) is the only 3D sensor that delivers submillimeter accuracy at up to 20 fps—even on moving objects. Its patented parallel structured light technology enables real-time, high-resolution scanning without halting production lines.



Ideal for continuous 3D scanning of moving objects & high-throughput applications

- Bin Picking
- Depalletization
- Conveyor Picking
- Inspection in Motion
- Automated Digital Twinning

Dynamic Object Handling & Time-Critical Automation



Up to **5x faster data acquisition** *



Cycle time decreased by up to **2 seconds** thanks to 3D data acquisition in motion



The throughput of applications increased up to **2,5 times**



RGB mapping on depth data enables **AI data processing**



The Only 3D Camera that captures 3D data in motion up to **90 mph (144 km/h)**

* Compared to traditional Sequential Structured Light 3D Scanner

97% of Logistics & Automotive Objects Are Now Pickable

Thanks to a 25% improvement in transparent scanning and challenging materials, 97% of logistics & automotive objects are now pickable, including dark, shiny & metallic objects.

Eliminate pre-sorting and expand automation to items previously considered unscannable. High-fidelity point cloud ensures even the most complex shapes are grip-ready.



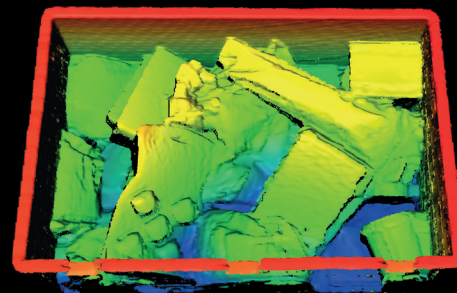
3D scan with color texture of unstructured medical items in transparent packaging



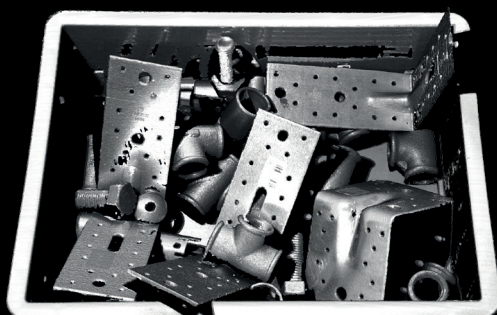
3D scan with color texture showing 4 six-packs of plastic bottles in transparent foil



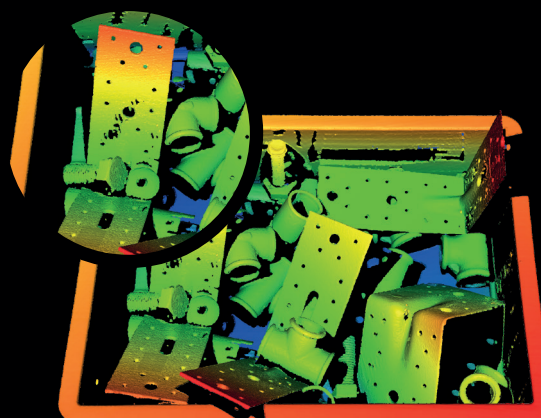
3D scan with color texture of mixed bin filled with transparent and glossy items



Point cloud colored with depth map showing transparent and glossy items



3D scan of unstructured mixed bin filled with reflective metallic parts



Point cloud colored with depth map showing unstructured mixed bin filled with reflective metallic parts

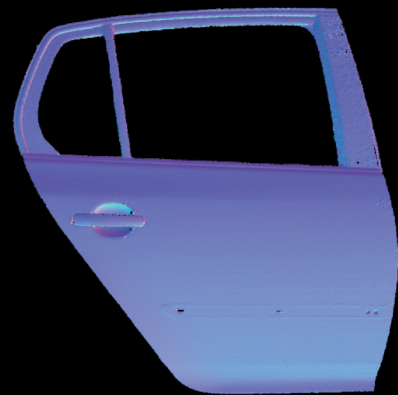
Accelerate Your Throughput — Cut Cycle Times by 50%

Unlock faster, sharper, and longer-range scanning. Enhanced projection unit delivers 50% boost in performance—speed, range, and accuracy, with improved signal-to-noise ratio.

- **Scan faster** – Cut even demanding scans durations by 50% with reduced exposure time.
- **Scan further** – Stronger projection and lower noise allow accurate long-distance scanning, ideal for pallet and large-part inspection at 4m / 13 feet.



3D scan with color texture of car door,
from 3,5 m / 11,5 ft



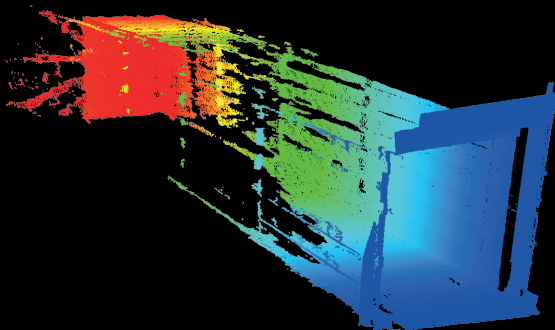
3D scan with normals of car door,
from 3,5 m / 11,5 ft



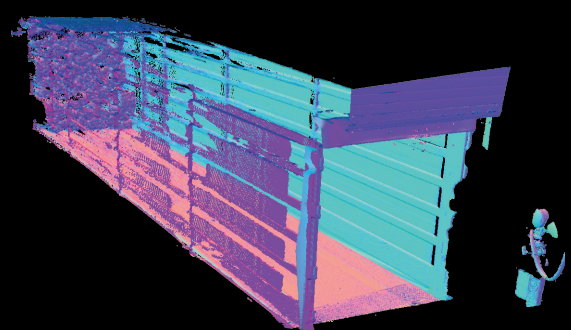
3D pointcloud with color texture showing
a stack of black tires scanned from 4 m / 13,1 ft distance



3D scan with normals showing a stack of black
tires scanned from 4 m / 13,1 ft distance



Point cloud colored with depth map showing cargo
truck trailer scan, 17m / 55.7ft scanning distance
(Tilted view - Scan taken from rear cargo door)



3D scan with normals showing cargo truck trailer
scan, 17m / 55.7ft scanning distance
(Tilted view - Scan taken from rear cargo door)

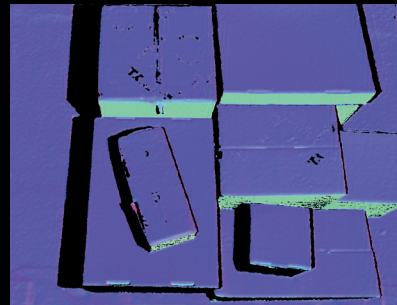
From Daylight to Over 1200°C/2200°F Metal Surfaces

Get clean, detailed scans where traditional systems fail.

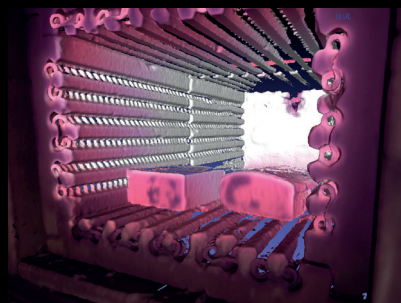
- Stay accurate in any lighting – Next-gen Ambient Light Resistance delivers reliable 3D data, even in direct sunlight or strong lighting.
- Localization and quality control of extreme surfaces – Precisely scan hot metal objects, even over 1200°C / 2200°F.



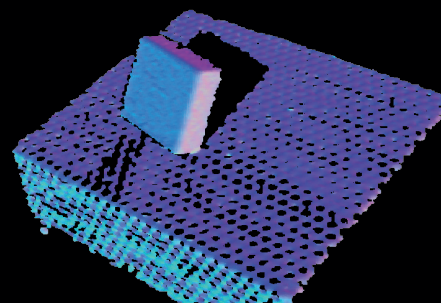
3D scan with color texture of boxes at high noon -
66ms capture time in dynamic mode



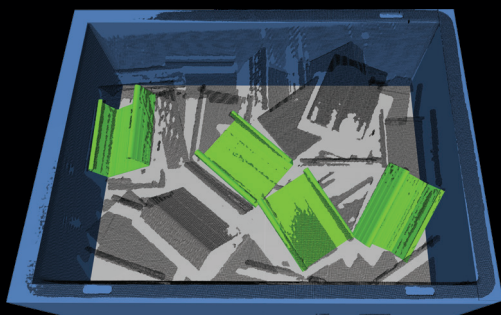
3D scan with normals of boxes at high noon
- 66ms capture time in dynamic mode



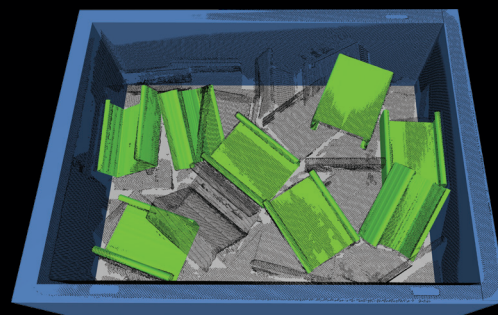
3D scan with color texture of industrial furnace with
hot metal at 1200°C / 2200°F



3D scan with normals showing hot metal object at
1200°C / 2200°F



Single perspective 3D scan

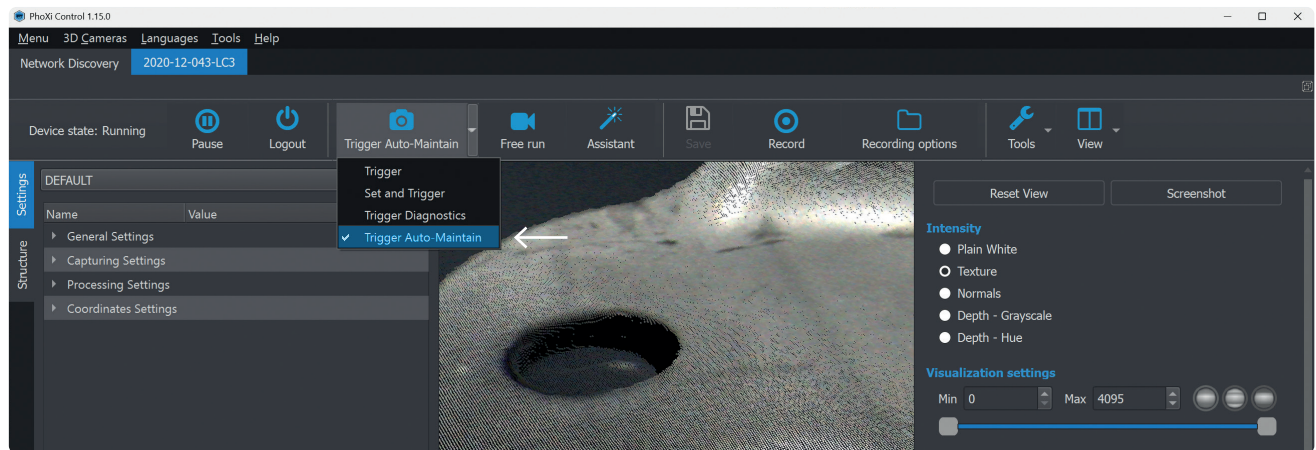


MultiView: Multi perspective 3D scan

Zero Maintenance Downtime

Forget everything you knew about device maintenance. Say goodbye to tedious manual on-site procedures and the complexities of scanning special marker patterns.

Our groundbreaking Autonomous Maintenance, seamlessly integrated within our software suite, allows you to fine-tune intrinsic parameters of your **MotionCam-3D Color (Blue)** effortlessly with a single click feature. Experience device maintenance as never seen before – just click, and it's done.



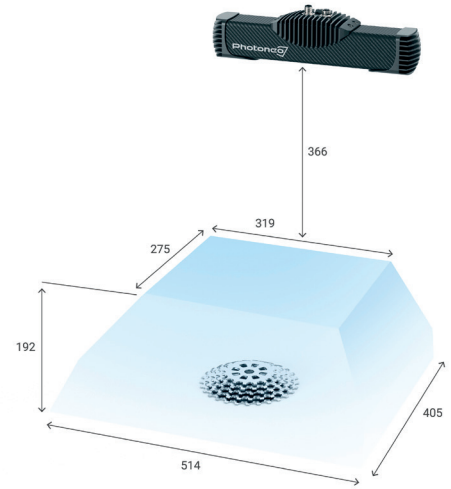
Fastest MultiView on the Market

Enhance your time-critical applications through simultaneous blue and red laser scanning with no interference. This advanced setup significantly boosts cycle times and data capture rates.

Whether free-running at full FPS for high-speed tasks like vehicle scanning, wood log measurement, or capturing snapshots with two devices simultaneously, this technology enhances 3D data completeness — leading to more accurate localization and higher success rates in demanding applications like Bin Picking and Digital Twinning.

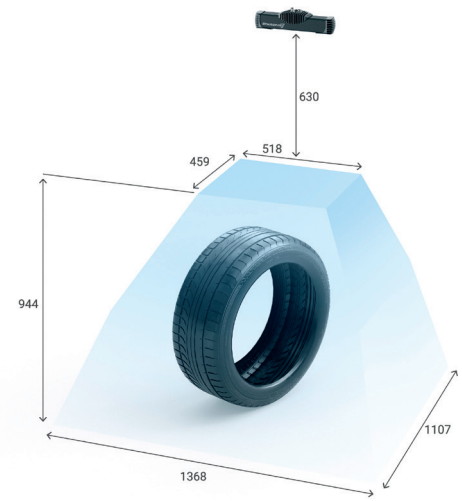


MotionCam-3D Color S (Blue)



3D sensing technology	Parallel Structured Light, Structured Light						
Output data	3D points (x y z), Normals (x y z), Depth Map (z), Color Image, Texture (grayscale/RGB), Confidence (float), Event Map (float)						
Scanning range (near - sweet - far)	366 - 444 - 558 mm						
Scanning area (sweet spot)	424 x 327 mm						
Operation Mode / Scene	Scanner mode (Static)			Camera mode (Dynamic)			
Scanning distance	Near	Sweet	Far	Near	Sweet	Far	
	366	444	558	366	444	558	
Relative distance accuracy (%)	1.7	1.7	1.7	1.95	1.95	1.95	
Global planarity (mm)	0.2	0.26	0.35	0.25	0.31	0.4	
Local planarity (mm)	0.1	0.12	0.15	0.12	0.14	0.17	
Temporal noise (mm)	0.02	0.02	0.03	0.03	0.03	0.04	
Point-to-point distance (mm)	2 Mpix	0.21	0.25	0.32	0.21	0.25	0.32
	0.9 Mpix				0.31	0.38	0.48
Color image resolution	Up to 8 Mpix			Up to 8 Mpix			
Depth map resolution	2 Mpix (1680 x 1200)			Up to 2 Mpix (1680 x 1200)			
Maximum FPS	Up to 2 fps (static scene)			Up to 20 fps (dynamic scene)			
Acquisition time	From 10ms						
Scanning time	From 60ms						
Dimensions	319 x 68 x 85 mm						
Baseline	230.0 mm						
Weight	1000 g						
Temperature working ranges	Full: 0 - 40 °C (32 - 104 °F) Optimal: 22 - 25 °C (71.6 - 77 °F)						
Projection unit laser color	Blue						
Power	PoE or 24V						
Data connection	1 Gbit Ethernet						
Processing unit	NVIDIA Jetson TX2						
IP rating	IP65						

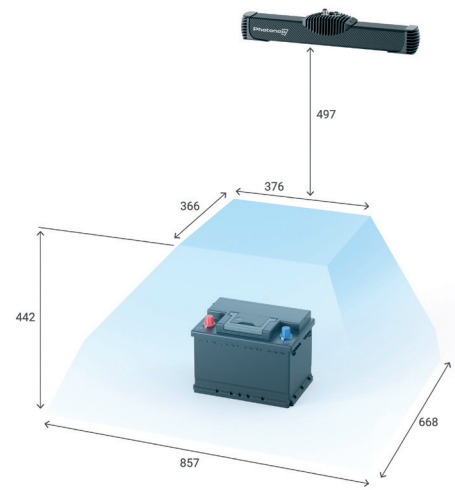
MotionCam-3D Color S+ (Blue)



3D sensing technology	Parallel Structured Light, Structured Light						
Output data	3D points (x y z), Normals (x y z), Depth Map (z), Color Image, Texture (grayscale/RGB), Confidence (float), Event Map (float)						
Scanning range (near - sweet - far)	630 - 907 - 1574 mm						
Scanning area (sweet spot)	828 x 649 mm						
Operation Mode / Scene	Scanner mode (Static)			Camera mode (Dynamic)			
Scanning distance	Near	Sweet	Far	Near	Sweet	Far	
	630	907	1574	630	907	1574	
Relative distance accuracy (%)	2	2	2	2.75	2.75	2.75	
Global planarity (mm)	0.45	0.77	1.55	0.75	1.07	1.85	
Local planarity (mm)	0.2	0.29	0.5	0.25	0.43	0.85	
Temporal noise (mm)	0.08	0.12	0.21	0.06	0.12	0.27	
Point-to-point distance (mm)	2 Mpix	0.36	0.52	0.91	0.36	0.52	0.91
	0.9 Mpix				0.54	0.78	1.36
Color image resolution	Up to 8 Mpix			Up to 8 Mpix			
Depth map resolution	2 Mpix (1680 x 1200)			Up to 2 Mpix (1680 x 1200)			
Maximum FPS	Up to 2 fps (static scene)			Up to 20 fps (dynamic scene)			
Acquisition time	From 10ms						
Scanning time	From 60ms						
Dimensions	319 x 68 x 85 mm						
Baseline	230.0 mm						
Weight	1000 g						
Temperature working ranges	Full: 0 - 40 °C (32 - 104 °F) Optimal: 22 - 25 °C (71.6 - 77 °F)						
Projection unit laser color	Blue						
Power	PoE or 24V						
Data connection	1 Gbit Ethernet						
Processing unit	NVIDIA Jetson TX2						
IP rating	IP65						

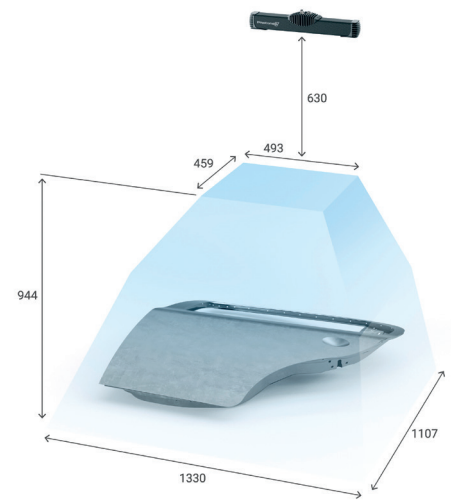
MotionCam-3D

Color M (Blue)



3D sensing technology	Parallel Structured Light, Structured Light						
Output data	3D points (x y z), Normals (x y z), Depth Map (z), Color Image, Texture (grayscale/RGB), Confidence (float), Event Map (float)						
Scanning range (near - sweet - far)	497 - 653 - 939 mm						
Scanning area (sweet spot)	588 x 473 mm						
Operation Mode / Scene	Scanner mode (Static)			Camera mode (Dynamic)			
Scanning distance	Near	Sweet	Far	Near	Sweet	Far	
	497	653	939	497	653	939	
Relative distance accuracy (%)	1.35	1.35	1.35	1.6	1.6	1.6	
Global planarity (mm)	0.25	0.29	0.35	0.3	0.34	0.4	
Local planarity (mm)	0.1	0.14	0.2	0.2	0.24	0.3	
Temporal noise (mm)	0.03	0.04	0.06	0.03	0.04	0.07	
Point-to-point distance (mm)	2 Mpix	0.28	0.37	0.54	0.28	0.37	0.54
	0.9 Mpix	0.43	0.56	0.81			
Color image resolution	Up to 8 Mpix			Up to 8 Mpix			
Depth map resolution	2 Mpix (1680 x 1200)			Up to 2 Mpix (1680 x 1200)			
Maximum FPS	Up to 2 fps (static scene)			Up to 20 fps (dynamic scene)			
Acquisition time	From 10ms						
Scanning time	From 60ms						
Dimensions	439 x 68 x 85 mm						
Baseline	350.0 mm						
Weight	1050 g						
Temperature working ranges	Full: 0 - 40 °C (32 - 104 °F) Optimal: 22 - 25 °C (71.6 - 77 °F)						
Projection unit laser color	Blue						
Power	PoE or 24V						
Data connection	1 Gbit Ethernet						
Processing unit	NVIDIA Jetson TX2						
IP rating	IP65						

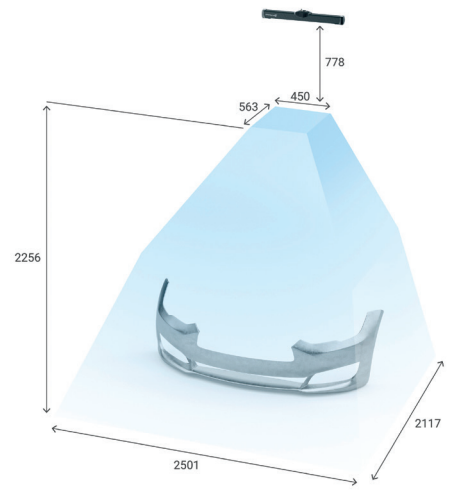
MotionCam-3D Color M+ (Blue)



3D sensing technology		Parallel Structured Light, Structured Light					
Output data		3D points (x y z), Normals (x y z), Depth Map (z), Color Image, Texture (grayscale/RGB), Confidence (float), Event Map (float)					
Scanning range (near - sweet - far)		630 - 907 - 1574 mm					
Scanning area (sweet spot)		841 x 649 mm					
Operation Mode / Scene		Scanner mode (Static)			Camera mode (Dynamic)		
Scanning distance		Near	Sweet	Far	Near	Sweet	Far
		630	907	1574	630	907	1574
Relative distance accuracy (%)		1.75	1.75	1.75	2.5	2.5	2.5
Global planarity (mm)		0.3	0.45	0.8	0.35	0.54	1
Local planarity (mm)		0.15	0.21	0.35	0.2	0.32	0.6
Temporal noise (mm)		0.05	0.08	0.16	0.04	0.09	0.21
Point-to-point distance (mm)	2 Mpix	0.36	0.52	0.91	0.36	0.52	0.91
	0.9 Mpix				0.54	0.78	1.36
Color image resolution		Up to 8 Mpix			Up to 8 Mpix		
Depth map resolution		2 Mpix (1680 x 1200)			Up to 2 Mpix (1680 x 1200)		
Maximum FPS		Up to 2 fps (static scene)			Up to 20 fps (dynamic scene)		
Acquisition time		From 10ms					
Scanning time		From 60ms					
Dimensions		439 x 68 x 85 mm					
Baseline		350.0 mm					
Weight		1050 g					
Temperature working ranges		Full: 0 - 40 °C (32 - 104 °F) Optimal: 22 - 25 °C (71.6 - 77 °F)					
Projection unit laser color		Blue					
Power		PoE or 24V					
Data connection		1 Gbit Ethernet					
Processing unit		NVIDIA Jetson TX2					
IP rating		IP65					

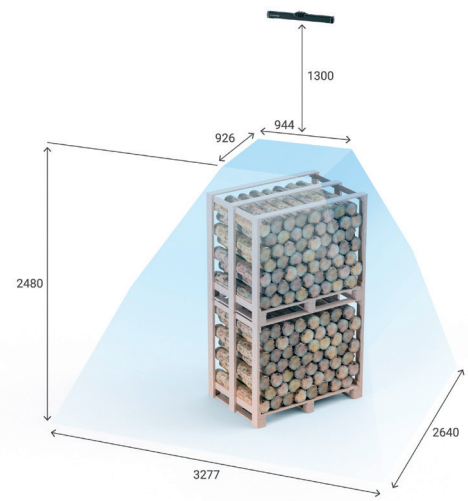
MotionCam-3D

Color L (Blue)



3D sensing technology	Parallel Structured Light, Structured Light						
Output data	3D points (x y z), Normals (x y z), Depth Map (z), Color Image, Texture (grayscale/RGB), Confidence (float), Event Map (float)						
Scanning range (near - sweet - far)	778 - 1252 - 3034 mm						
Scanning area (sweet spot)	1027 x 889 mm						
Operation Mode / Scene	Scanner mode (Static)			Camera mode (Dynamic)			
Scanning distance	Near	Sweet	Far	Near	Sweet	Far	
	778	1252	3034	778	1252	3034	
Relative distance accuracy (%)	1.75	1.75	1.75	2	2	2	
Global planarity (mm)	0.4	0.87	2.65	0.45	1.15	3.8	
Local planarity (mm)	0.2	0.37	1	0.25	0.48	1.35	
Temporal noise (mm)	0.07	0.12	0.32	0.03	0.12	0.48	
Point-to-point distance (mm)	2 Mpix	0.45	0.72	1.75	0.45	0.72	1.75
	0.9 Mpix	0.67	1.09	2.63			
Color image resolution	Up to 8 Mpix			Up to 8 Mpix			
Depth map resolution	2 Mpix (1680 x 1200)			Up to 2 Mpix (1680 x 1200)			
Maximum FPS	Up to 2 fps (static scene)			Up to 20 fps (dynamic scene)			
Acquisition time	From 10ms						
Scanning time	From 60ms						
Dimensions	639 x 68 x 85 mm						
Baseline	550.0 mm						
Weight	1150 g						
Temperature working ranges	Full: 0 - 40 °C (32 - 104 °F) Optimal: 22 - 25 °C (71.6 - 77 °F)						
Projection unit laser color	Blue						
Power	PoE or 24V						
Data connection	1 Gbit Ethernet						
Processing unit	NVIDIA Jetson TX2						
IP rating	IP65						

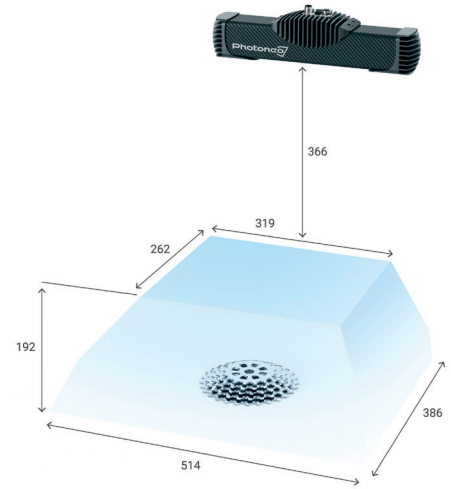
MotionCam-3D Color L+ (Blue)



3D sensing technology	Parallel Structured Light, Structured Light						
Output data	3D points (x y z), Normals (x y z), Depth Map (z), Color Image, Texture (grayscale/RGB), Confidence (float), Event Map (float)						
Scanning range (near - sweet - far)	1300 - 1944 - 3780 mm						
Scanning area (sweet spot)	1656 x 1371 mm						
Operation Mode / Scene	Scanner mode (Static)			Camera mode (Dynamic)			
Scanning distance	Near	Sweet	Far	Near	Sweet	Far	
	1300	1944	3780	1300	1944	3780	
Relative distance accuracy (%)	2.5	2.5	2.5	3	3	3	
Global planarity (mm)	0.6	2.11	6.4	0.7	2.6	8	
Local planarity (mm)	0.25	0.51	1.25	0.5	0.89	2	
Temporal noise (mm)	0.06	0.21	0.62	0.07	0.27	0.83	
Point-to-point distance (mm)	2 Mpix	0.75	1.13	2.19	0.75	1.13	2.19
	0.9 Mpix				1.13	1.69	3.29
Color image resolution	Up to 8 Mpix			Up to 8 Mpix			
Depth map resolution	2 Mpix (1680 x 1200)			Up to 2 Mpix (1680 x 1200)			
Maximum FPS	Up to 2 fps (static scene)			Up to 20 fps (dynamic scene)			
Acquisition time	From 10ms						
Scanning time	From 60ms						
Dimensions	639 x 68 x 85 mm						
Baseline	550.0 mm						
Weight	1150 g						
Temperature working ranges	Full: 0 - 40 °C (32 - 104 °F) Optimal: 22 - 25 °C (71.6 - 77 °F)						
Projection unit laser color	Blue						
Power	PoE or 24V						
Data connection	1 Gbit Ethernet						
Processing unit	NVIDIA Jetson TX2						
IP rating	IP65						

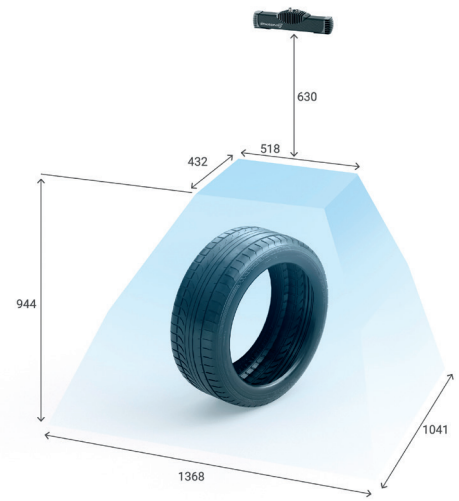
MotionCam-3D

Color S (Red)



3D sensing technology	Parallel Structured Light, Structured Light						
Output data	3D points (x y z), Normals (x y z), Depth Map (z), Color Image, Texture (grayscale/RGB), Confidence (float), Event Map (float)						
Scanning range (near - sweet - far)	366 - 444 - 558 mm						
Scanning area (sweet spot)	424 x 312 mm						
Operation Mode / Scene	Scanner mode (Static)			Camera mode (Dynamic)			
Scanning distance	Near	Sweet	Far	Near	Sweet	Far	
	366	444	558	366	444	558	
Relative distance accuracy (%)	1.7	1.7	1.7	1.95	1.95	1.95	
Global planarity (mm)	0.2	0.26	0.35	0.25	0.31	0.4	
Local planarity (mm)	0.1	0.12	0.15	0.12	0.14	0.17	
Temporal noise (mm)	0.02	0.02	0.03	0.03	0.03	0.04	
Point-to-point distance (mm)	2 Mpix	0.21	0.25	0.32	0.21	0.25	0.32
	0.9 Mpix	0.31	0.38	0.48			
Color image resolution	Up to 8 Mpix			Up to 8 Mpix			
Depth map resolution	2 Mpix (1680 x 1200)			Up to 2 Mpix (1680 x 1200)			
Maximum FPS	Up to 2 fps (static scene)			Up to 20 fps (dynamic scene)			
Acquisition time	From 10ms						
Scanning time	From 60ms						
Dimensions	319 x 68 x 85 mm						
Baseline	230.0 mm						
Weight	1000 g						
Temperature working ranges	Full: 0 - 40 °C (32 - 104 °F) Optimal: 22 - 25 °C (71.6 - 77 °F)						
Projection unit laser color	Red						
Power	PoE or 24V						
Data connection	1 Gbit Ethernet						
Processing unit	NVIDIA Jetson TX2						
IP rating	IP65						

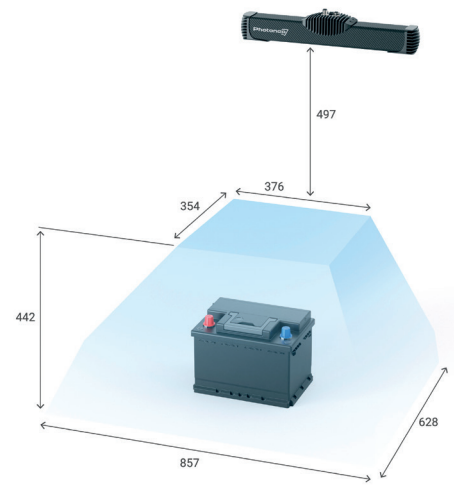
MotionCam-3D Color S+ (Red)



3D sensing technology		Parallel Structured Light, Structured Light					
Output data		3D points (x y z), Normals (x y z), Depth Map (z), Color Image, Texture (grayscale/RGB), Confidence (float), Event Map (float)					
Scanning range (near - sweet - far)		630 - 907 - 1574 mm					
Scanning area (sweet spot)		828 x 610 mm					
Operation Mode / Scene		Scanner mode (Static)			Camera mode (Dynamic)		
Scanning distance		Near	Sweet	Far	Near	Sweet	Far
		630	907	1574	630	907	1574
Relative distance accuracy (%)		2	2	2	2.75	2.75	2.75
Global planarity (mm)		0.45	0.77	1.55	0.75	1.07	1.85
Local planarity (mm)		0.2	0.29	0.5	0.25	0.43	0.85
Temporal noise (mm)		0.08	0.12	0.21	0.06	0.12	0.27
Point-to-point distance (mm)	2 Mpix	0.36	0.52	0.91	0.36	0.52	0.91
	0.9 Mpix				0.54	0.78	1.36
Color image resolution		Up to 8 Mpix			Up to 8 Mpix		
Depth map resolution		2 Mpix (1680 x 1200)			Up to 2 Mpix (1680 x 1200)		
Maximum FPS		Up to 2 fps (static scene)			Up to 20 fps (dynamic scene)		
Acquisition time		From 10ms					
Scanning time		From 60ms					
Dimensions		319 x 68 x 85 mm					
Baseline		230.0 mm					
Weight		1000 g					
Temperature working ranges		Full: 0 - 40 °C (32 - 104 °F) Optimal: 22 - 25 °C (71.6 - 77 °F)					
Projection unit laser color		Red					
Power		PoE or 24V					
Data connection		1 Gbit Ethernet					
Processing unit		NVIDIA Jetson TX2					
IP rating		IP65					

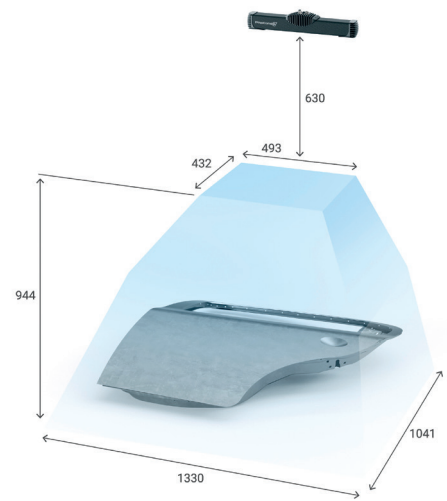
MotionCam-3D

Color M (Red)



3D sensing technology	Parallel Structured Light, Structured Light						
Output data	3D points (x y z), Normals (x y z), Depth Map (z), Color Image, Texture (grayscale/RGB), Confidence (float), Event Map (float)						
Scanning range (near - sweet - far)	497 - 653 - 939 mm						
Scanning area (sweet spot)	588 x 444 mm						
Operation Mode / Scene	Scanner mode (Static)			Camera mode (Dynamic)			
Scanning distance	Near	Sweet	Far	Near	Sweet	Far	
	497	653	939	497	653	939	
Relative distance accuracy (%)	1.35	1.35	1.35	1.6	1.6	1.6	
Global planarity (mm)	0.25	0.29	0.35	0.3	0.34	0.4	
Local planarity (mm)	0.1	0.14	0.2	0.2	0.24	0.3	
Temporal noise (mm)	0.03	0.04	0.06	0.03	0.04	0.07	
Point-to-point distance (mm)	2 Mpix	0.28	0.37	0.54	0.28	0.37	0.54
	0.9 Mpix	0.43	0.56	0.81			
Color image resolution	Up to 8 Mpix			Up to 8 Mpix			
Depth map resolution	2 Mpix (1680 x 1200)			Up to 2 Mpix (1680 x 1200)			
Maximum FPS	Up to 2 fps (static scene)			Up to 20 fps (dynamic scene)			
Acquisition time	From 10ms						
Scanning time	From 60ms						
Dimensions	439 x 68 x 85 mm						
Baseline	350.0 mm						
Weight	1050 g						
Temperature working ranges	Full: 0 - 40 °C (32 - 104 °F) Optimal: 22 - 25 °C (71.6 - 77 °F)						
Projection unit laser color	Red						
Power	PoE or 24V						
Data connection	1 Gbit Ethernet						
Processing unit	NVIDIA Jetson TX2						
IP rating	IP65						

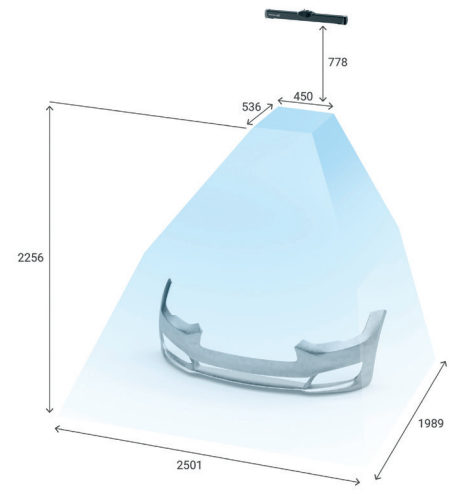
MotionCam-3D Color M+ (Red)



3D sensing technology		Parallel Structured Light, Structured Light					
Output data		3D points (x y z), Normals (x y z), Depth Map (z), Color Image, Texture (grayscale/RGB), Confidence (float), Event Map (float)					
Scanning range (near - sweet - far)		630 - 907 - 1574 mm					
Scanning area (sweet spot)		841 x 610 mm					
Operation Mode / Scene		Scanner mode (Static)			Camera mode (Dynamic)		
Scanning distance		Near	Sweet	Far	Near	Sweet	Far
		630	907	1574	630	907	1574
Relative distance accuracy (%)		1.75	1.75	1.75	2.5	2.5	2.5
Global planarity (mm)		0.3	0.45	0.8	0.35	0.54	1
Local planarity (mm)		0.15	0.21	0.35	0.2	0.32	0.6
Temporal noise (mm)		0.05	0.08	0.16	0.04	0.09	0.21
Point-to-point distance (mm)	2 Mpix	0.36	0.52	0.91	0.36	0.52	0.91
	0.9 Mpix				0.54	0.78	1.36
Color image resolution		Up to 8 Mpix			Up to 8 Mpix		
Depth map resolution		2 Mpix (1680 x 1200)			Up to 2 Mpix (1680 x 1200)		
Maximum FPS		Up to 2 fps (static scene)			Up to 20 fps (dynamic scene)		
Acquisition time		From 10ms					
Scanning time		From 60ms					
Dimensions		439 x 68 x 85 mm					
Baseline		350.0 mm					
Weight		1050 g					
Temperature working ranges		Full: 0 - 40 °C (32 - 104 °F) Optimal: 22 - 25 °C (71.6 - 77 °F)					
Projection unit laser color		Red					
Power		PoE or 24V					
Data connection		1 Gbit Ethernet					
Processing unit		NVIDIA Jetson TX2					
IP rating		IP65					

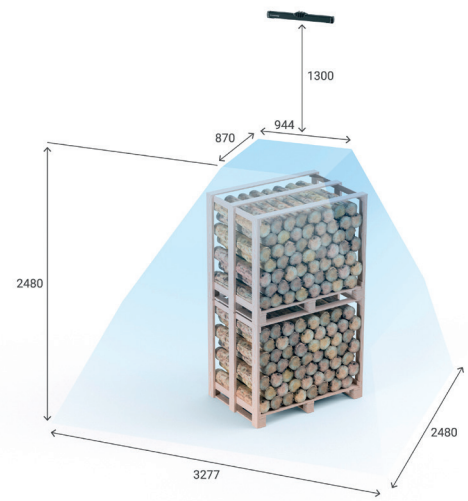
MotionCam-3D

Color L (Red)



3D sensing technology	Parallel Structured Light, Structured Light						
Output data	3D points (x y z), Normals (x y z), Depth Map (z), Color Image, Texture (grayscale/RGB), Confidence (float), Event Map (float)						
Scanning range (near - sweet - far)	778 - 1252 - 3034 mm						
Scanning area (sweet spot)	1027 x 836 mm						
Operation Mode / Scene	Scanner mode (Static)			Camera mode (Dynamic)			
Scanning distance	Near	Sweet	Far	Near	Sweet	Far	
	778	1252	3034	778	1252	3034	
Relative distance accuracy (%)	1.75	1.75	1.75	2	2	2	
Global planarity (mm)	0.4	0.87	2.65	0.45	1.15	3.8	
Local planarity (mm)	0.2	0.37	1	0.25	0.48	1.35	
Temporal noise (mm)	0.07	0.12	0.32	0.03	0.12	0.48	
Point-to-point distance (mm)	2 Mpix	0.45	0.72	1.75	0.45	0.72	1.75
	0.9 Mpix	0.67	1.09	2.63			
Color image resolution	Up to 8 Mpix			Up to 8 Mpix			
Depth map resolution	2 Mpix (1680 x 1200)			Up to 2 Mpix (1680 x 1200)			
Maximum FPS	Up to 2 fps (static scene)			Up to 20 fps (dynamic scene)			
Acquisition time	From 10ms						
Scanning time	From 60ms						
Dimensions	639 x 68 x 85 mm						
Baseline	550.0 mm						
Weight	1150 g						
Temperature working ranges	Full: 0 - 40 °C (32 - 104 °F) Optimal: 22 - 25 °C (71.6 - 77 °F)						
Projection unit laser color	Red						
Power	PoE or 24V						
Data connection	1 Gbit Ethernet						
Processing unit	NVIDIA Jetson TX2						
IP rating	IP65						

MotionCam-3D Color L+ (Red)



3D sensing technology	Parallel Structured Light, Structured Light						
Output data	3D points (x y z), Normals (x y z), Depth Map (z), Color Image, Texture (grayscale/RGB), Confidence (float), Event Map (float)						
Scanning range (near - sweet - far)	1300 - 1944 - 3780 mm						
Scanning area (sweet spot)	1656 x 1288 mm						
Operation Mode / Scene	Scanner mode (Static)			Camera mode (Dynamic)			
Scanning distance	Near	Sweet	Far	Near	Sweet	Far	
	1300	1944	3780	1300	1944	3780	
Relative distance accuracy (%)	2.5	2.5	2.5	3	3	3	
Global planarity (mm)	0.6	2.11	6.4	0.7	2.6	8	
Local planarity (mm)	0.25	0.51	1.25	0.5	0.89	2	
Temporal noise (mm)	0.06	0.21	0.62	0.07	0.27	0.83	
Point-to-point distance (mm)	2 Mpix	0.75	1.13	2.19	0.75	1.13	2.19
	0.9 Mpix				1.13	1.69	3.29
Color image resolution	Up to 8 Mpix			Up to 8 Mpix			
Depth map resolution	2 Mpix (1680 x 1200)			Up to 2 Mpix (1680 x 1200)			
Maximum FPS	Up to 2 fps (static scene)			Up to 20 fps (dynamic scene)			
Acquisition time	From 10ms						
Scanning time	From 60ms						
Dimensions	639 x 68 x 85 mm						
Baseline	550.0 mm						
Weight	1150 g						
Temperature working ranges	Full: 0 - 40 °C (32 - 104 °F) Optimal: 22 - 25 °C (71.6 - 77 °F)						
Projection unit laser color	Red						
Power	PoE or 24V						
Data connection	1 Gbit Ethernet						
Processing unit	NVIDIA Jetson TX2						
IP rating	IP65						



Photoneo
Focused on 3D
NOW PART OF ZEBRA TECHNOLOGIES



MultiView
Hand-eye Scanning
In Motion

Contact sales

Europe Headquarters
(Slovakia)

+421 948 766 479

photoneo-sales@zebra.com

USA & Canada

photoneo-sales-us@zebra.com

See it in motion here:

