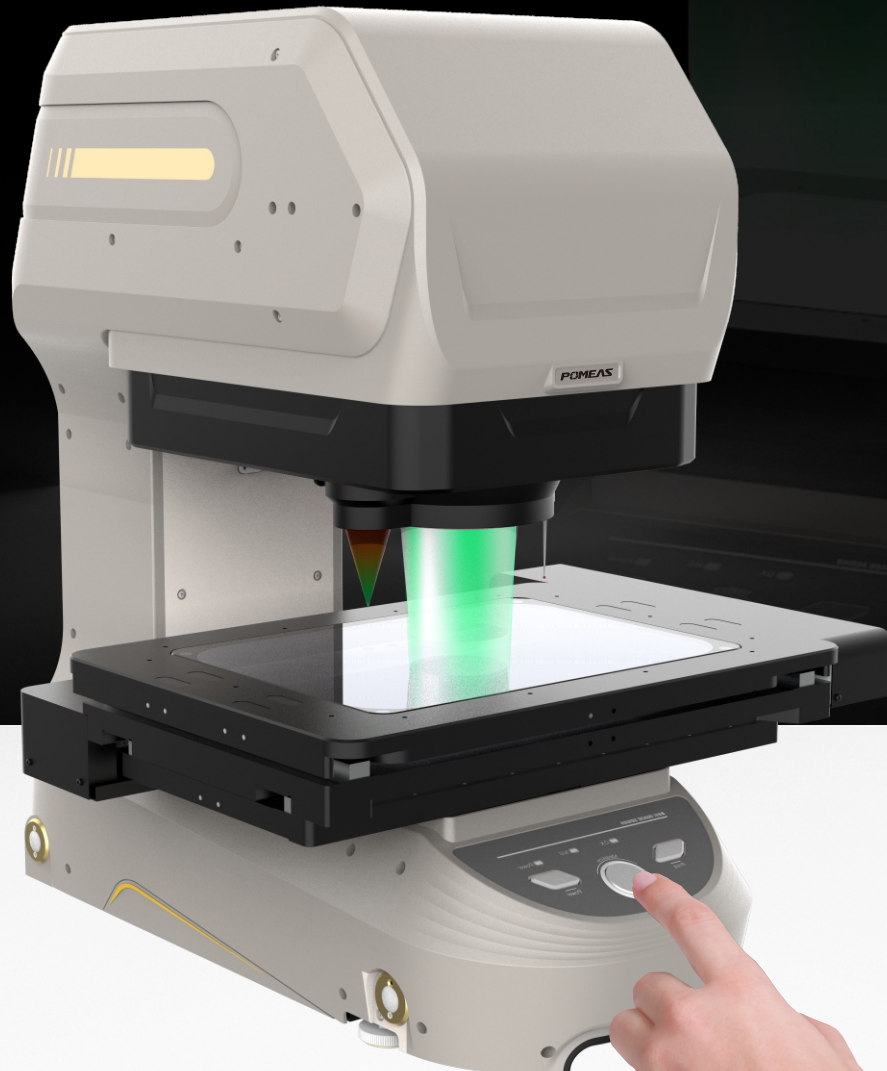


Image Dimension Measurement Systems

# IMAGE 3 Range

**The IMAGE 3 Series Consists of :**

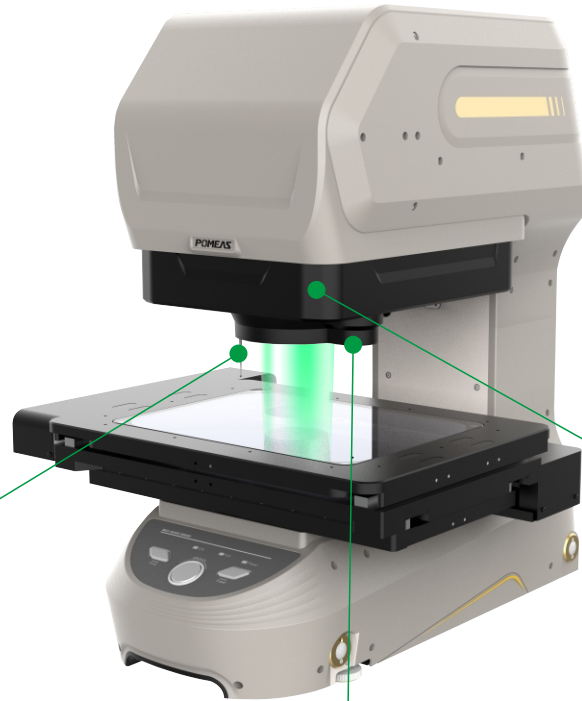
- IMAGE 3
- IMAGE 3 PLUS
- IMAGE 3 PRO
- IMAGE 3 PRO-H
- IMAGE 3 MAX
- IMAGE 3 MAX 2
- Digital Microscope MICRO IMAGE3



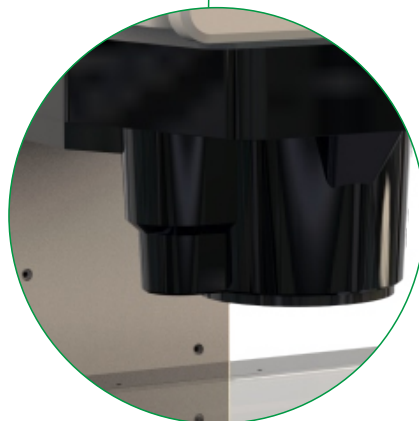
# IMAGE 3

More Measurement Methods And Techniques

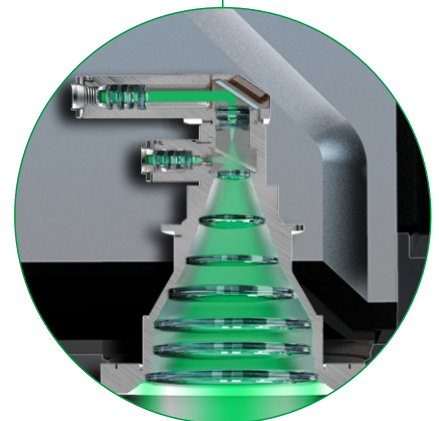
## Three Measurement Methods Easy and Highly Accurate Measurement



Contact Probes  
CMM Stereo Objects



8055 Point Spectral Confocal Sensor  
Instantaneous Height Measurement

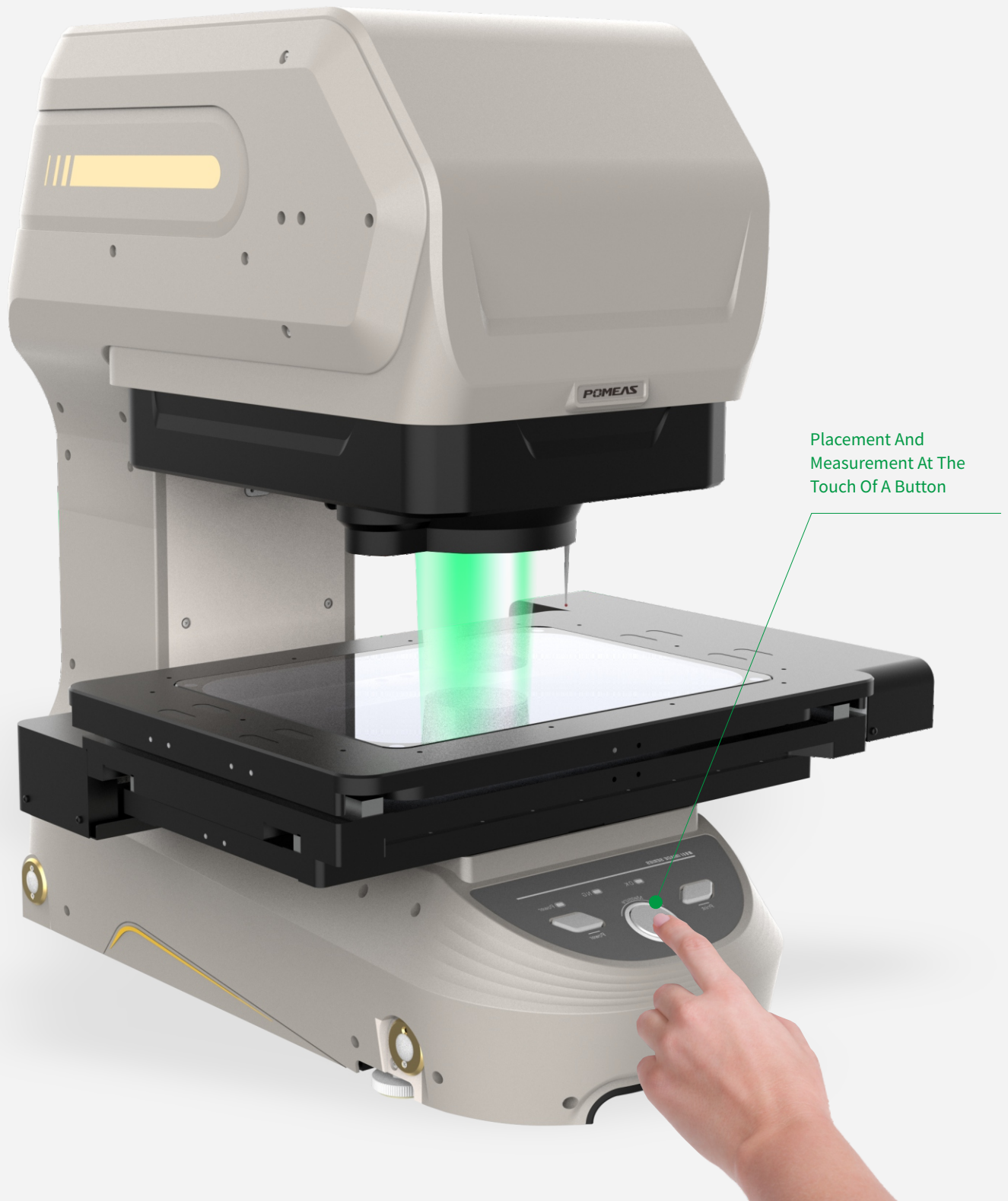


Ultra High Definition Camera  
High Precision Image Measurement

# “Measure With A Single Click After Placement”

The Fully Automatic Image Measuring Machine

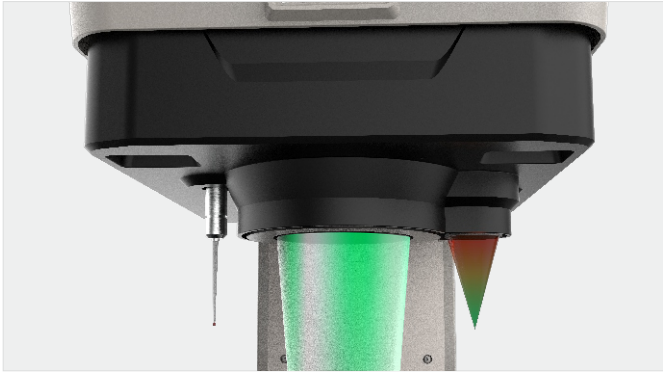
Has Been Further Upgraded



Placement And  
Measurement At The  
Touch Of A Button

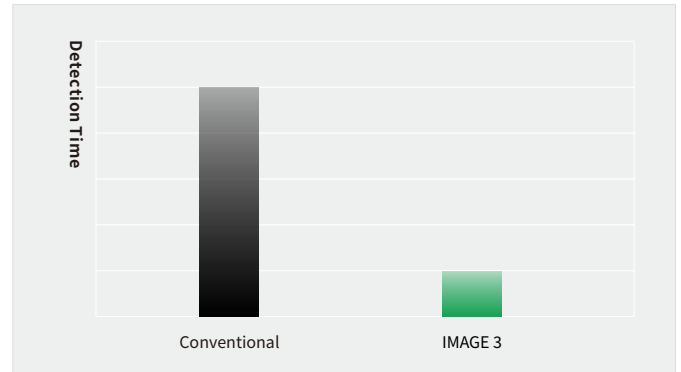
## Highly Accurate Measurements In Both XY And Z Directions.

- ◆ High-precision image measurement at  $\pm 0.5\mu\text{m}$ ;
- ◆ High-speed, high-precision coordinate measurement;



## Measurement Time Reduced To 1/5

- ◆ Up to several targets can be measured simultaneously;
- ◆ Objects do not need to be positioned, they can simply be placed and measured;



## ◆ Easy Setup For Easy Operation

- Intuitive settings with just one click;
- Confirmation of the overall image by color images;
- Easy-to-grasp display of measurement elements;

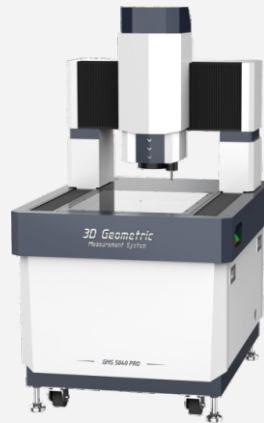
Run		
Test: PMSFBG		
Running times: 10   Current times: 10		
1	Diameter -1	29.9145 mm OK
2	Diameter -2	2.9932 mm OK
3	Diameter -3	2.9935 mm OK
4	Diameter -4	1.9917 mm OK
5	Diameter -5	1.9909 mm OK
6	Diameter -6	2.9954 mm OK
7	Diameter -7	2.9891 mm OK
8	Diameter -8	1.3719 mm OK
9	Diameter -9	1.3619 mm OK
10	Distance -1	8.0130 mm OK
11	Distance -2	13.9725 mm OK
12	Distance -3	21.9426 mm OK

# One Machine To Solve All The Challenges Of Dimensional Measurement

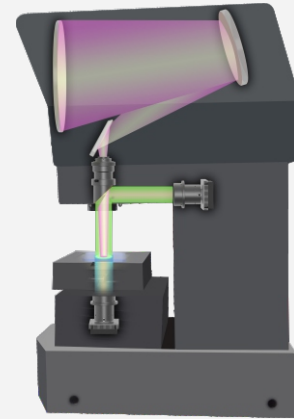
## Difficulties In Dimensional Measurement



Tool Microscope



Imaging Device



Contour Projector

## Human Error

- ◆ Individual differences lead to different focusing positions;
- ◆ Individual differences resulting in different measurement points;
- ◆ Differences in illumination methods lead to variations in values;

## Time-consuming Measurement

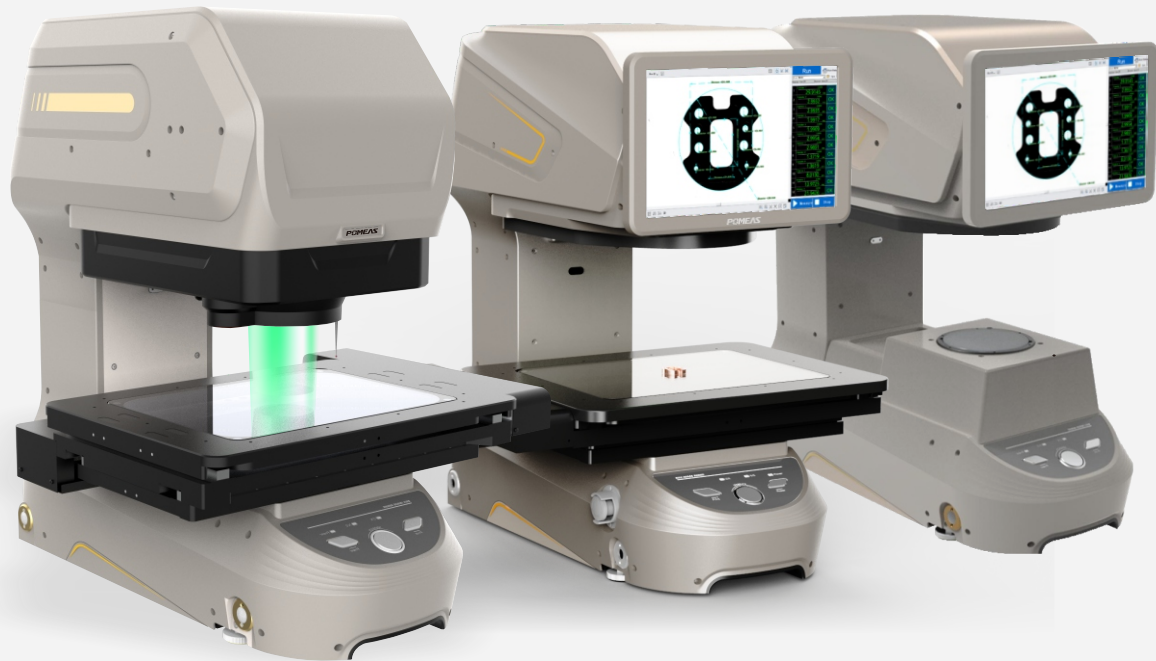
- ◆ Time-consuming datum adjustment
- ◆ More time if more parts are measured
- ◆ More time if the number of measurements increases

## Hard Operate

- ◆ Narrow field of view, making it difficult to identify the measurement site
- ◆ Requires specialized knowledge to operate
- ◆ Complicated screen, time-consuming training

# One Machine To Solve All The Challenges Of Dimensional Measurement

The IMAGE Series Solves A Variety Of Challenges



## No Human Error

- ◆ Automatic focusing to eliminate human error;
  - ◆ Accurate measurements with contact probes and color lasers;
  - ◆ Reproducible illumination for accurate measurements.
- 

## Quick Measurement

- ◆ Can be placed in different positions for measurement without repeated adjustments;
  - ◆ Measures up to 100 parts in 1 second;
  - ◆ Significantly reduces measurement time.
- 

## Easy Setup

- ◆ Easy to understand settings by observing the whole image;
  - ◆ Intuitive operation with just a mouse click;
  - ◆ Built-in step-by-step instructions for first-time users.
-

Highly Accurate/Fast/Easy Micron Measurement

Highly  
Accurate

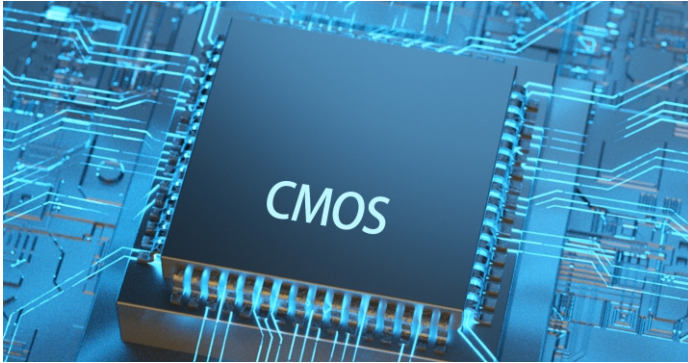
Realization Of  $\pm 0.5\mu\text{m}$  High Precision Measurement  
Highly Accurate, Fast And Simple Micrometer  
Measurements



## Highly Accurate/Fast/Easy Micron Measurement

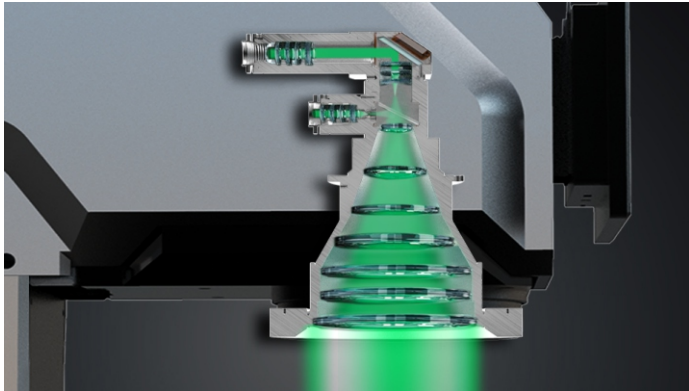
**Highly  
Accurate**

High-precision Cmos Camera  
High-resolution Double Telecentric Lens;  
Detection Principle To Avoid Human Error



### High Precision CMOS Camera

Equipped with a 20-megapixel black-and-white CMOS sensor that maximizes the resolution of the lens; makes it easy to observe higher-definition images.



### High Resolution Double Telecentric Lens

The newly developed high-resolution dual telecentric lenses make it possible to clearly observe edges that cannot be seen without increasing the magnification; makes it easy to perform more accurate measurements.

### Detection Principle That Avoids Human Error

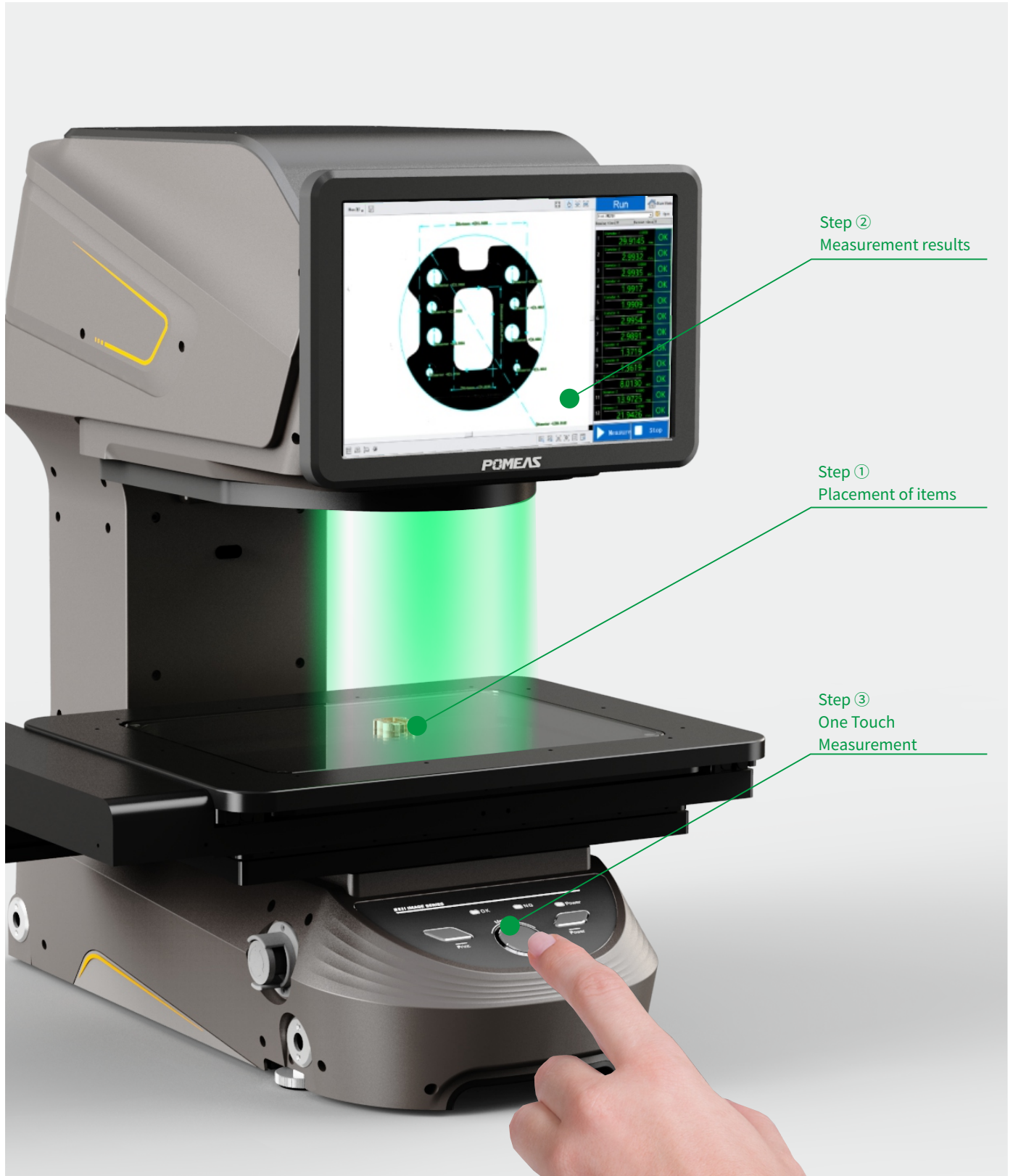
Adopting one-button measurement design, the software operation interface is simple and easy to understand, so anyone can easily operate and obtain stable results.



Highly Accurate/Fast/Easy Micron Measurement

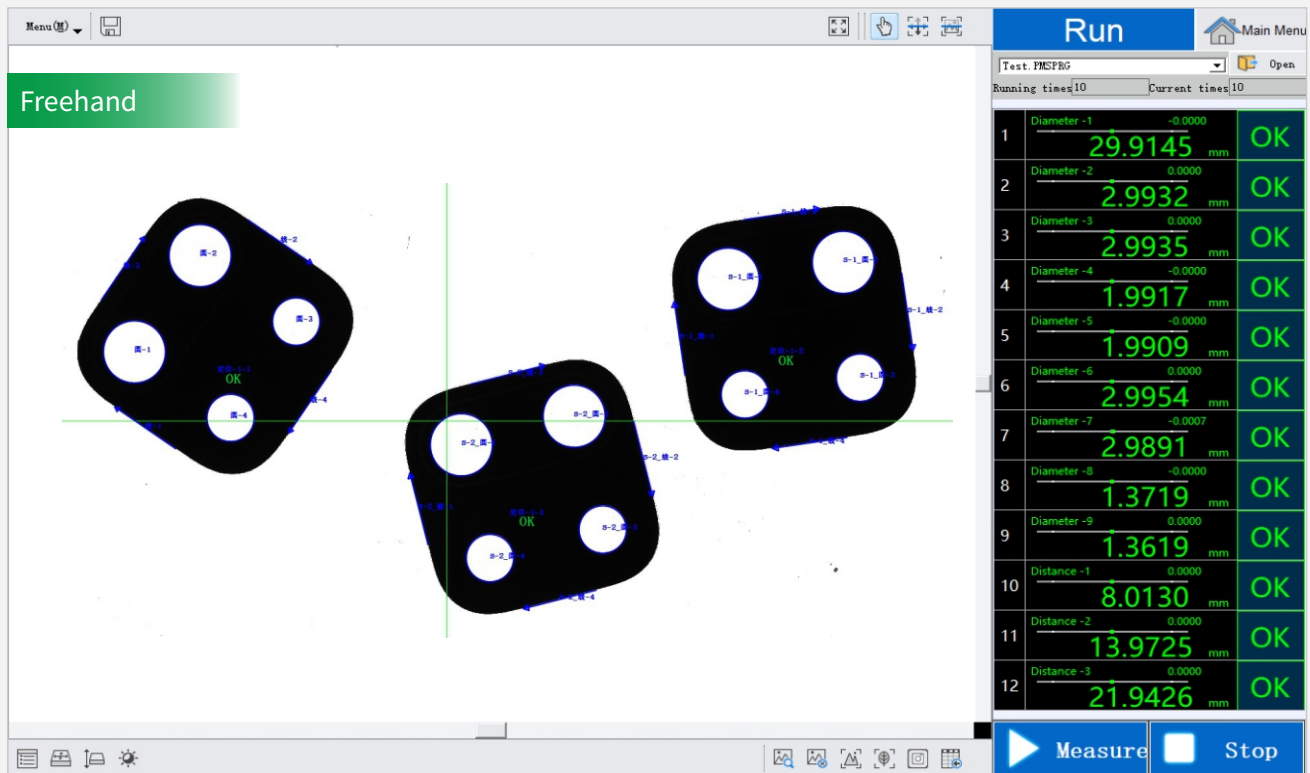
**Fast**

Significantly Reduces Measurement Time



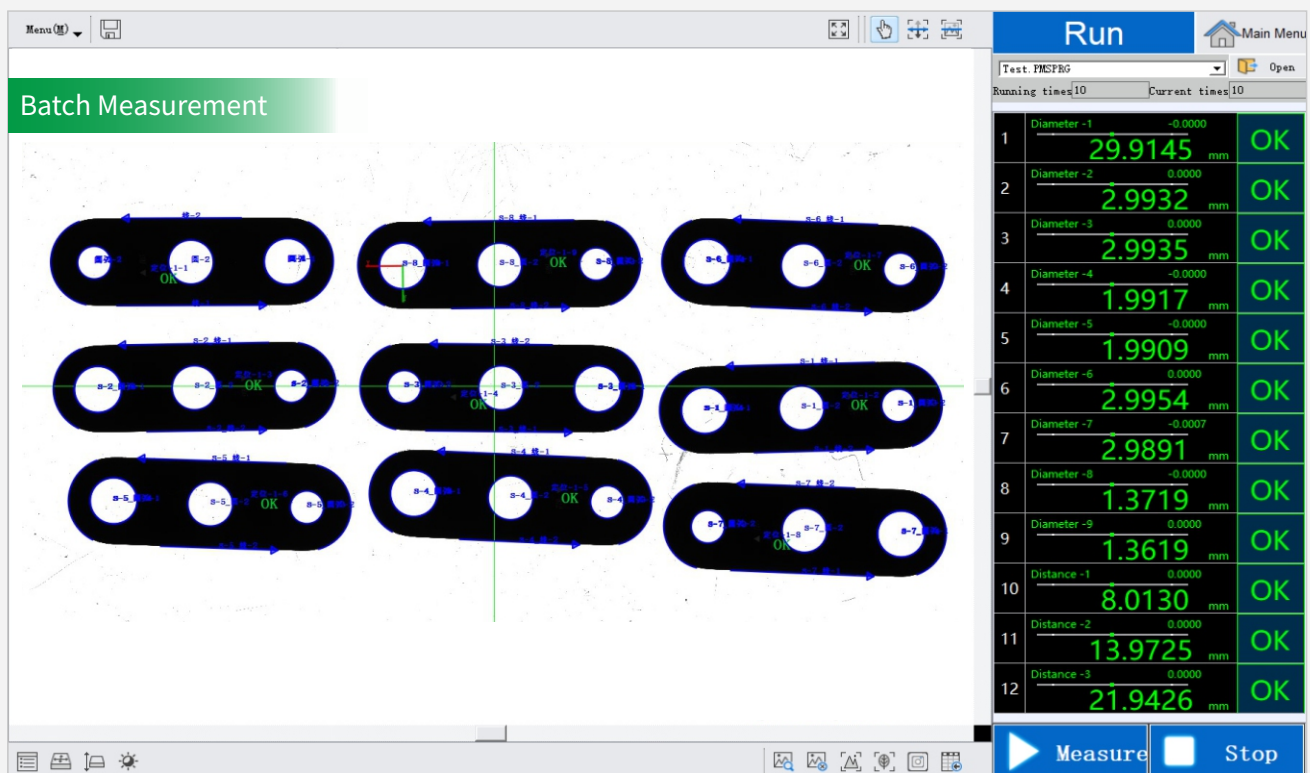
## Automatic Recognition Of Random Placement Reduces Placement Time

Automatically recognizes the position and direction, truly realizing the new function of “measuring by pressing one button after placing”, which greatly saves working hours and improves efficiency.



## Simultaneous Measurement Of Multiple Products At The Touch Of A Button Reduces Costs

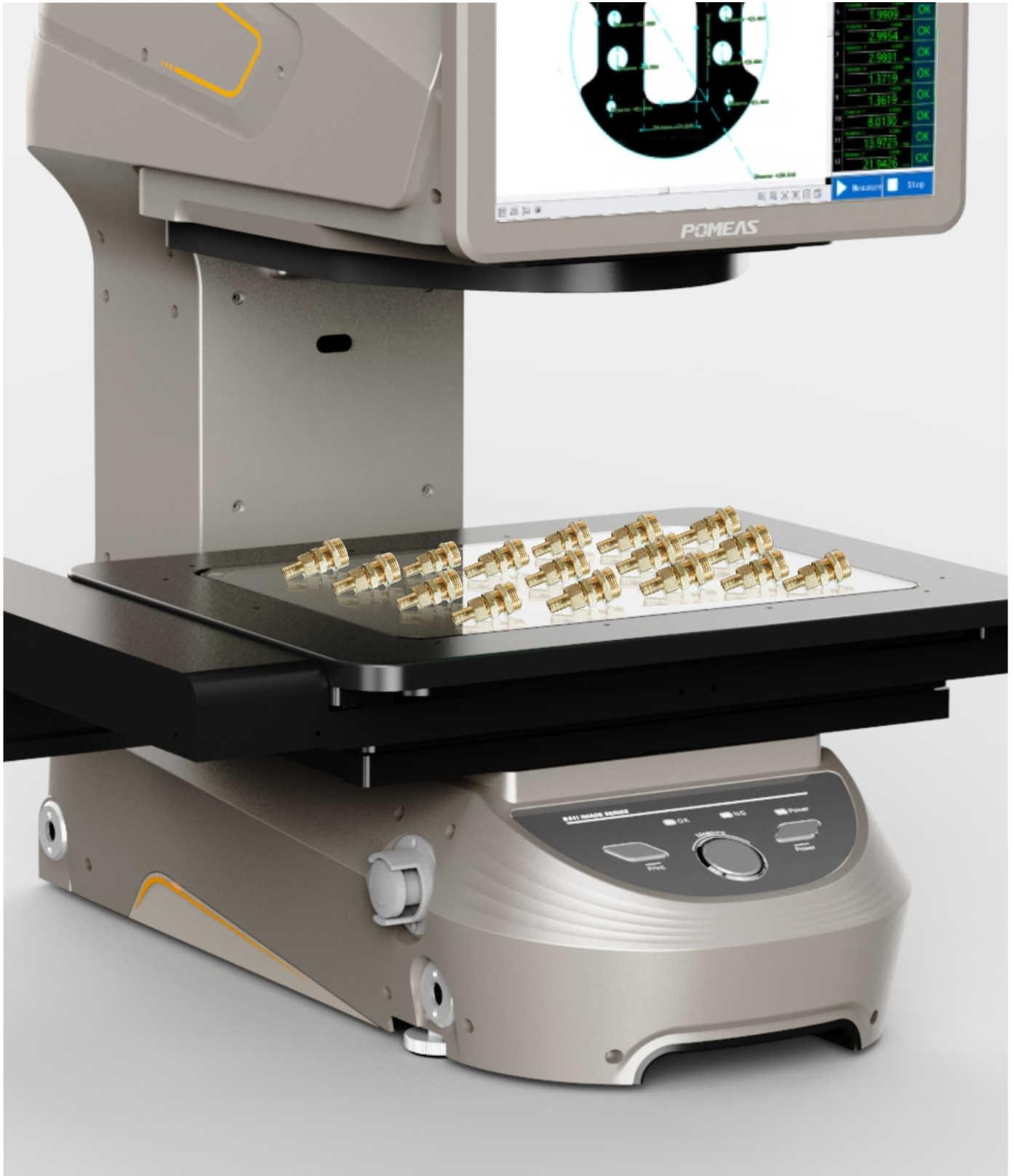
It can measure 100 parts in 1 second, and multiple products can be measured at the same time, which greatly saves measuring time and reduces labor cost!



Highly Accurate/Fast/Easy Micron Measurement

**Simpler**

Simple Operation At A Glance

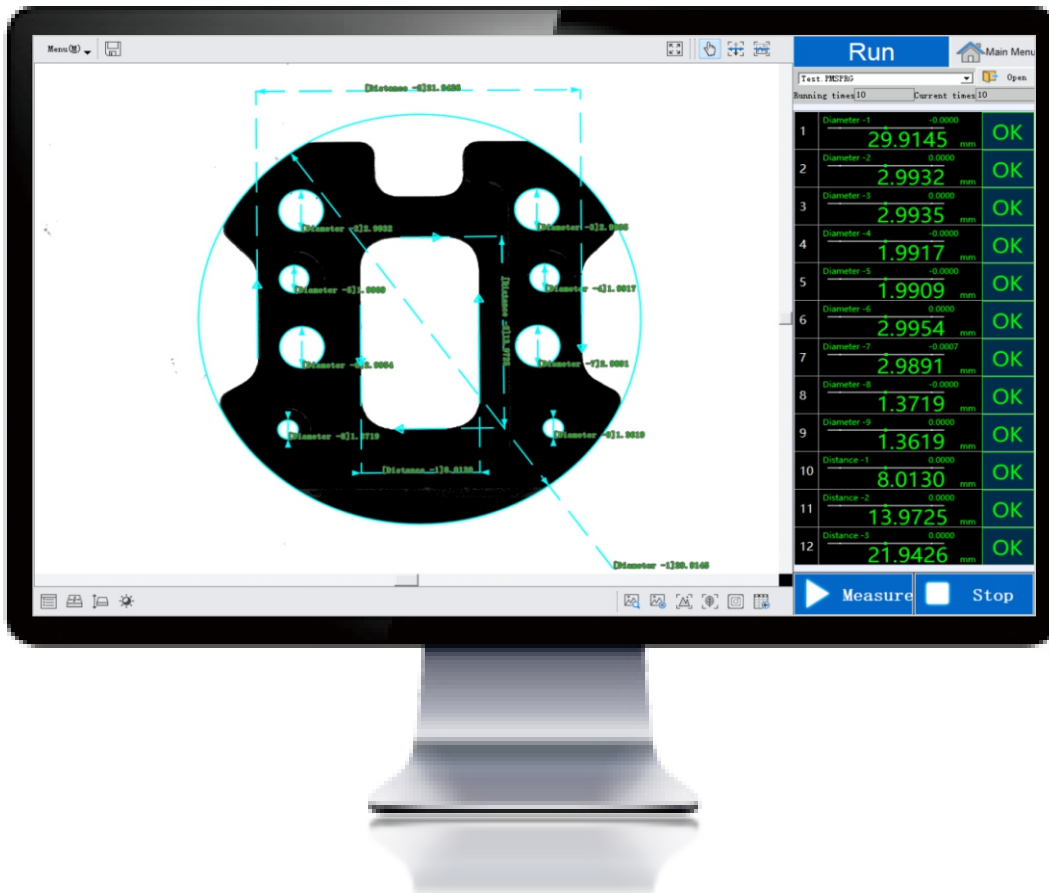


Highly Accurate/Fast/Easy Micron Measurement

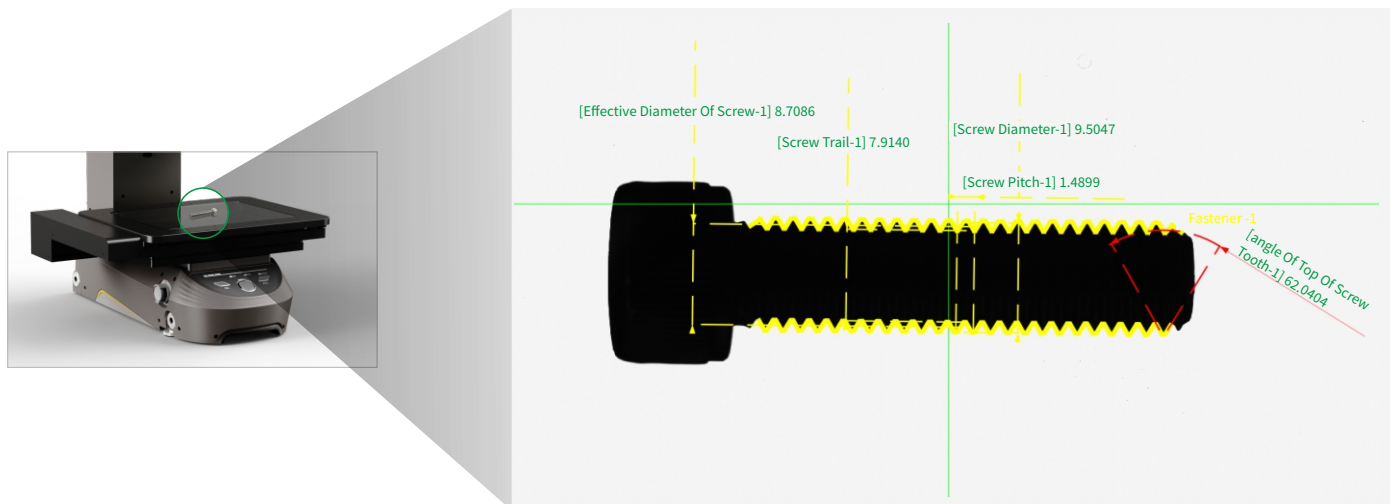
**Simpler**

Intuitive And Easy-to-understand Interface;  
Automatic Recognition Of The Elements To Be Measured

■ Easy-to-understand Software Interface



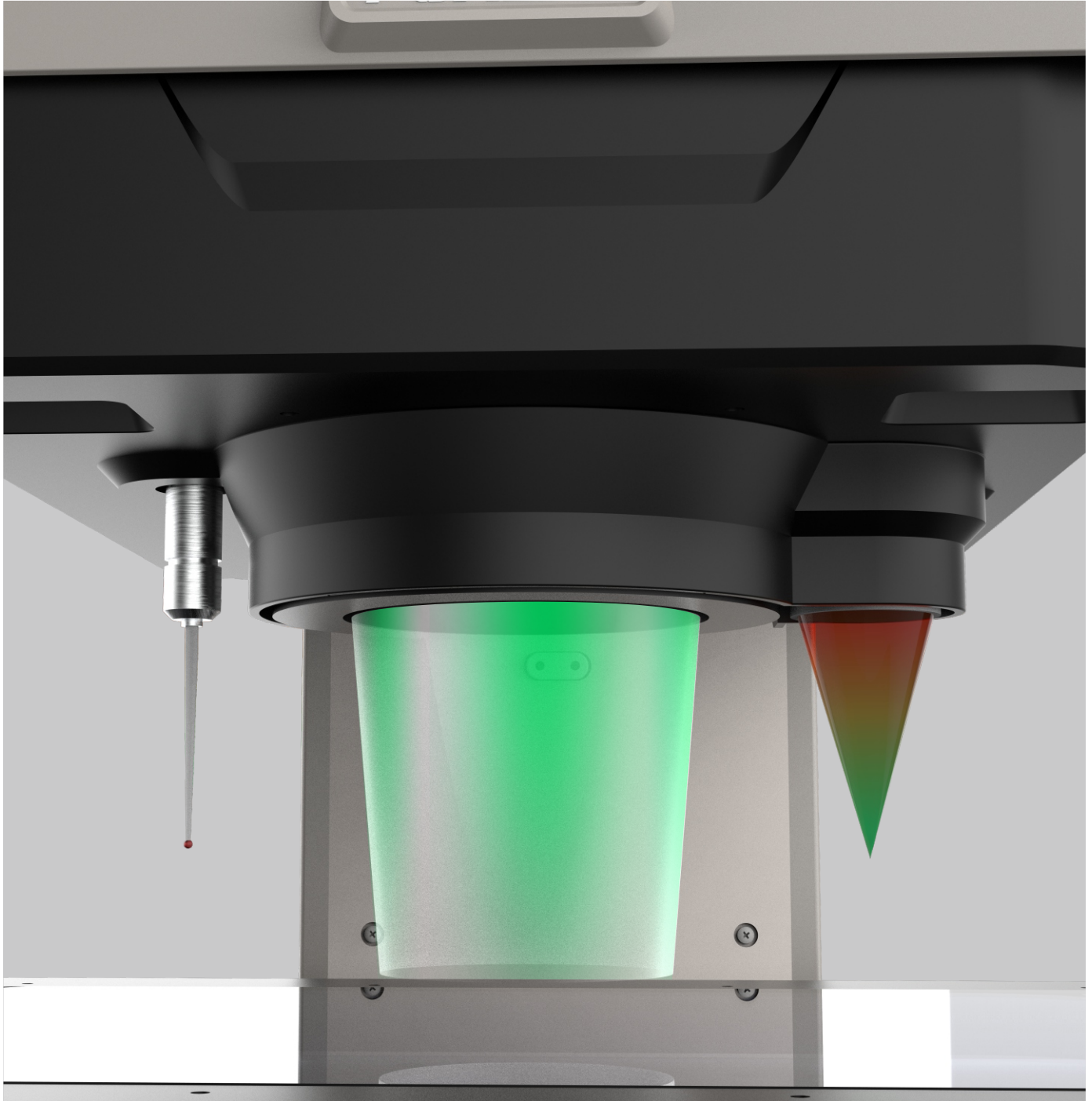
■ Easy For Anyone To Operate And Give Consistent Results



Highly Accurate/Fast/Easy Micron Measurement

**Simpler**

Platform Status At A Glance



### **High Resolution Navigation Lens**

The newly developed high-resolution navigation lens enables clear observation of edge parts that cannot be seen without increasing the magnification.

Easily performs higher precision measurements

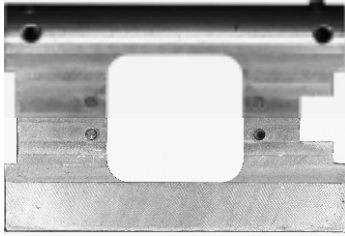
## Highly Accurate/Fast/Easy Micron Measurement

# Simpler High-Precision Autofocus

### Easy To Achieve Correct Focus

Equipped with an optical lens specially designed for a large depth of field, and for targets that cannot be focused at once due to uneven surfaces, automatic focusing is possible based on the measurement position, eliminating focusing errors due to differences in the workforce.

#### Targets With Large Height Differences



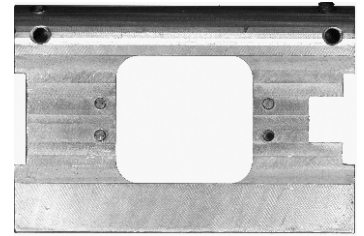
Focus Only On The Top Edge



Focus On Lower Edge Only

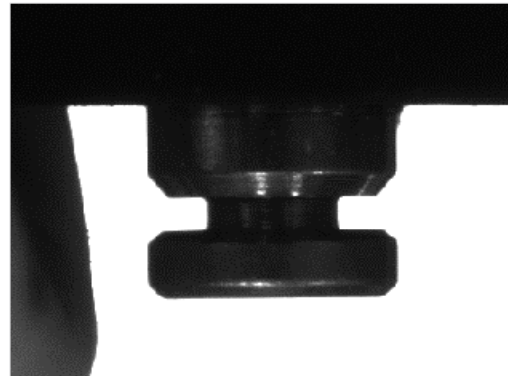


#### Automatic Focus Adjustment And Measurement



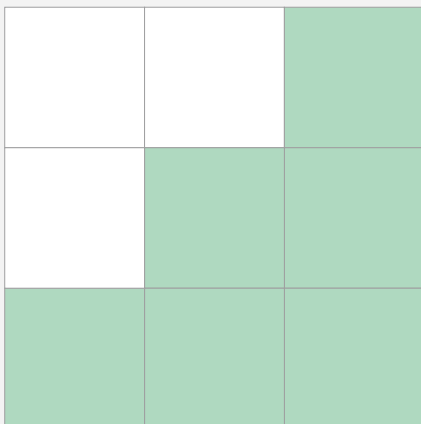
### No Deviation Due To Focus Adjustment

The use of large depth of field optical lens, the depth of field range of size can be clearly measured; in addition, equipped with auto-focus function to measure the height of the product in different positions has no effect on the results, so that the measurement results are more accurate.

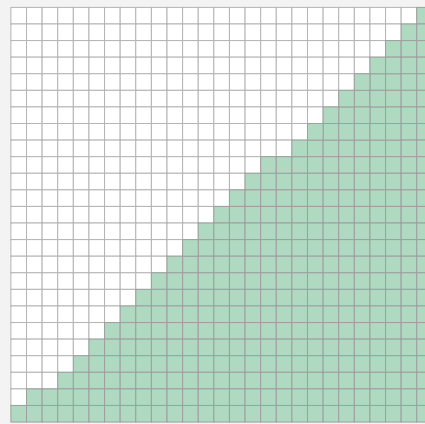


### Automatic Pixel Processing

In order to achieve high-precision measurements, the decomposition of a pixel grid into multiple pixel grids is used.



No Pixel Processing



Pixel Processing

## Highly Accurate/Fast/Easy Micron Measurement

# Simpler

## See The Status Of Your Workbench At A Glance

### ■ The Navigation Lens Can Quickly Find Out The Location Of The Target And The Status Of The Target.

Memorizes the shape of the target and automatically detects and measures the position and orientation on the coordinate table; eliminating the need for time-consuming and laborious positioning, coordinate creation, and the use of fixed fixtures.

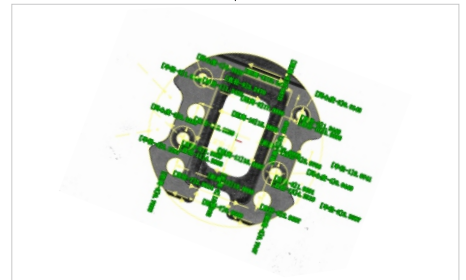
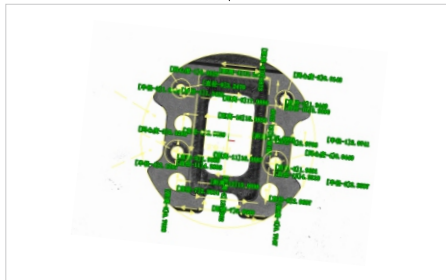
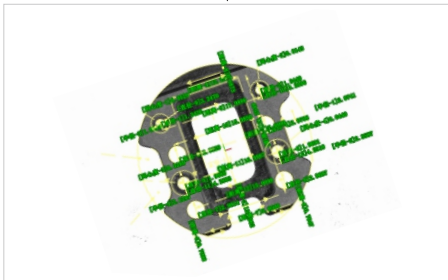
Put It On The Left.



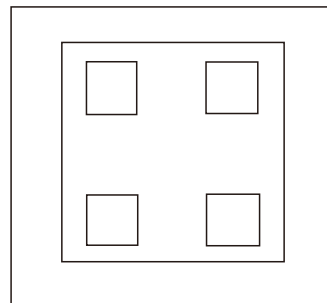
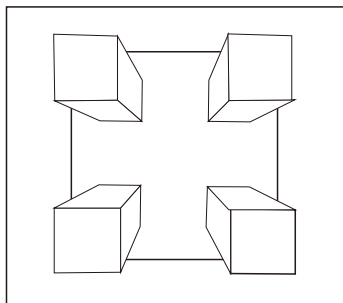
Centrally Located



Put It On The Right.

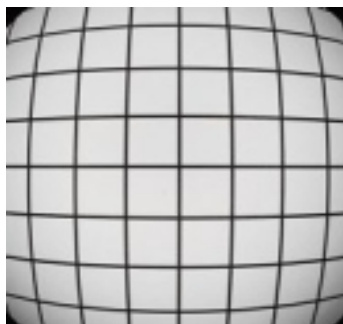


### ■ No Distortion Even With Segment Differences

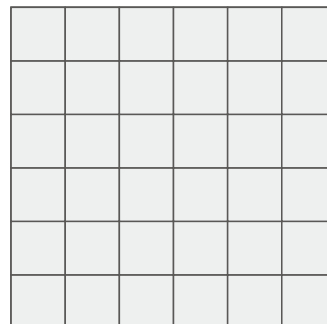


### ■ Low Distortion Images Without Distortion

Even when measuring at the edge of the lens, there is very little image distortion, so there is no need to worry about where the measurement object is placed.



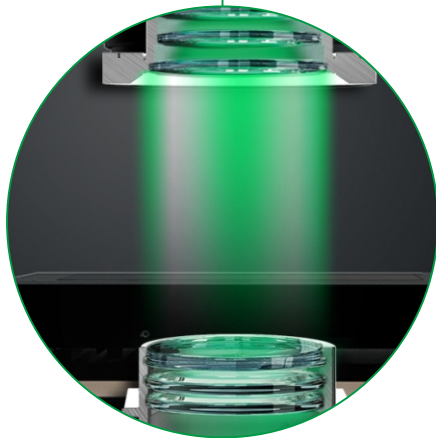
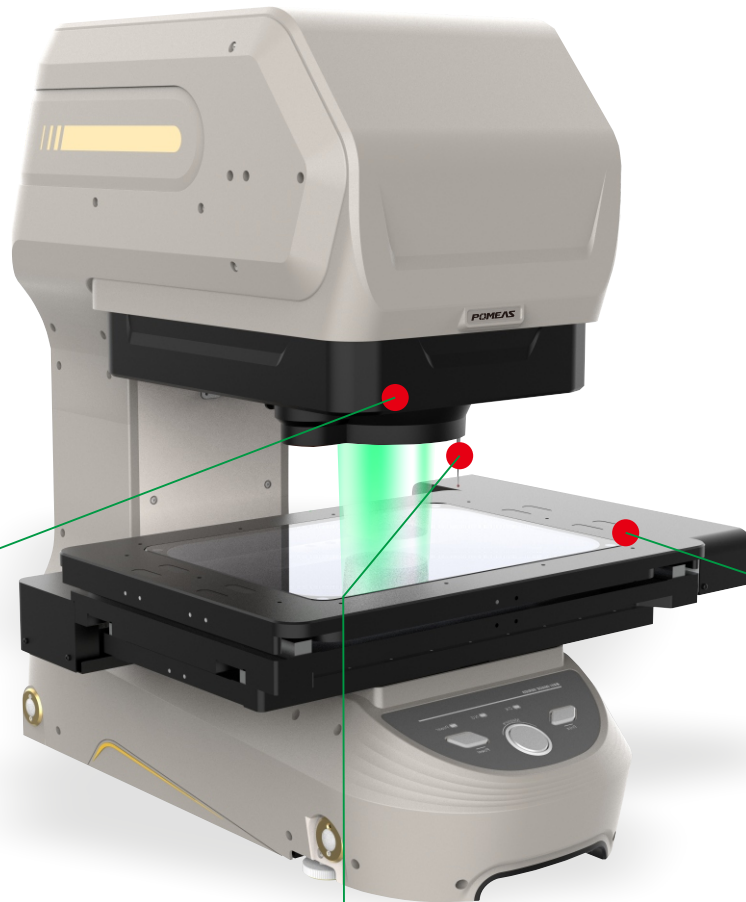
Normal Lens



POMEAS Lens

Technologies For Realizing High-precision Measurements

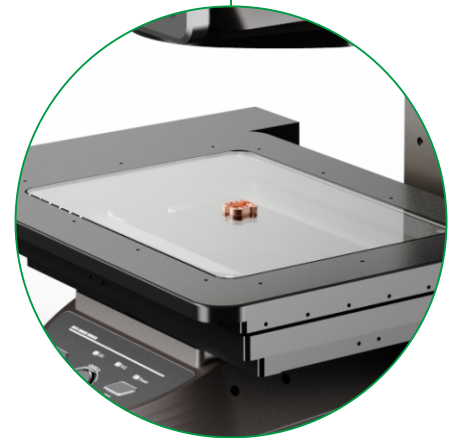
## IMAGE 3 Techniques For Realizing High-precision Measurements



Optical System That Accurately Captures The Edges To Be Measured



XYZ Coordinate Measurement

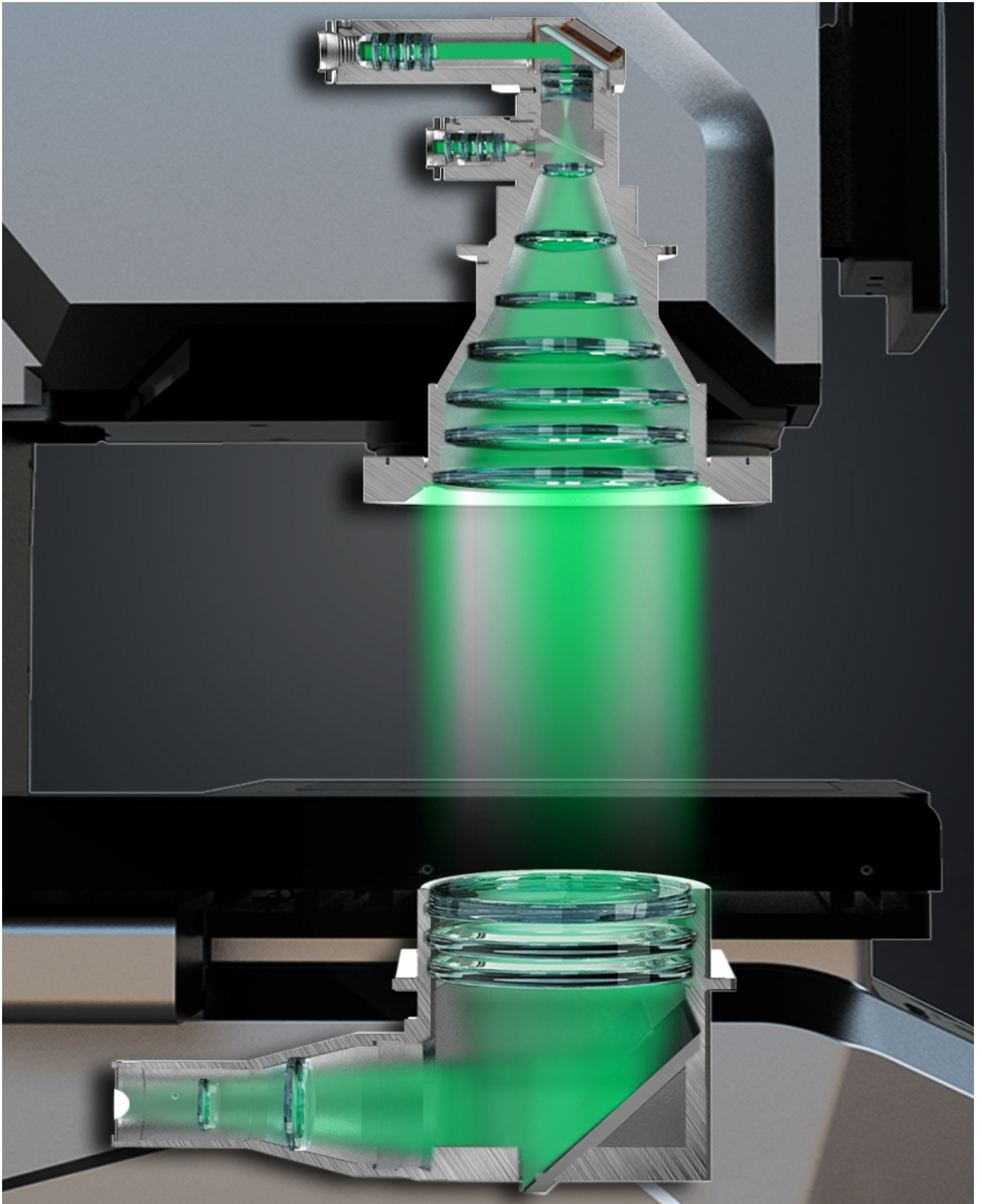


High-precision Large-scale Coordinate Table

## Technologies For Realizing High-precision Measurements

### High-resolution dual telecentric lenses

Optical System That Accurately Captures The Edges To Be Measured

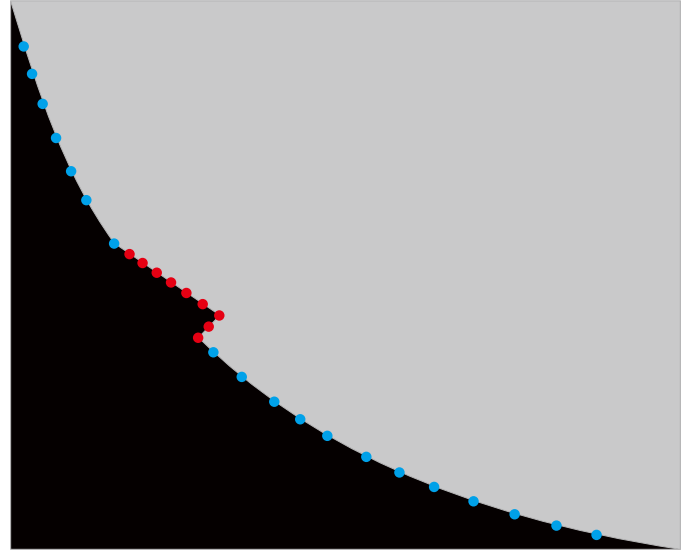
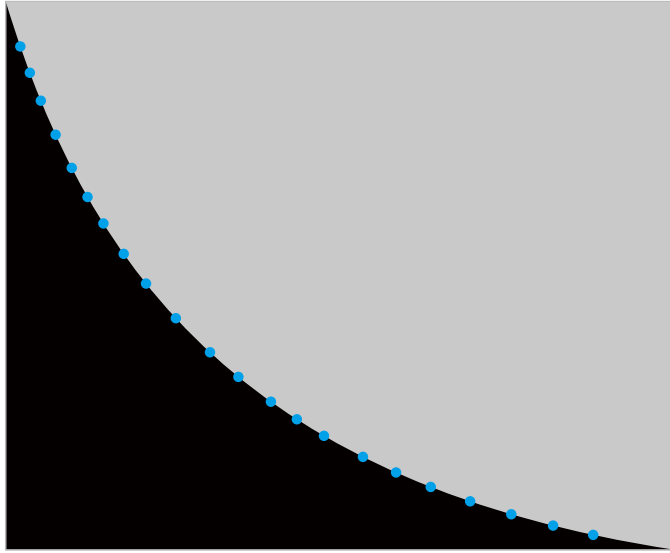


# Technologies For Realizing High-precision Measurements

## Superior Edge-grabbing Algorithms, Adjustable Light Source Sets

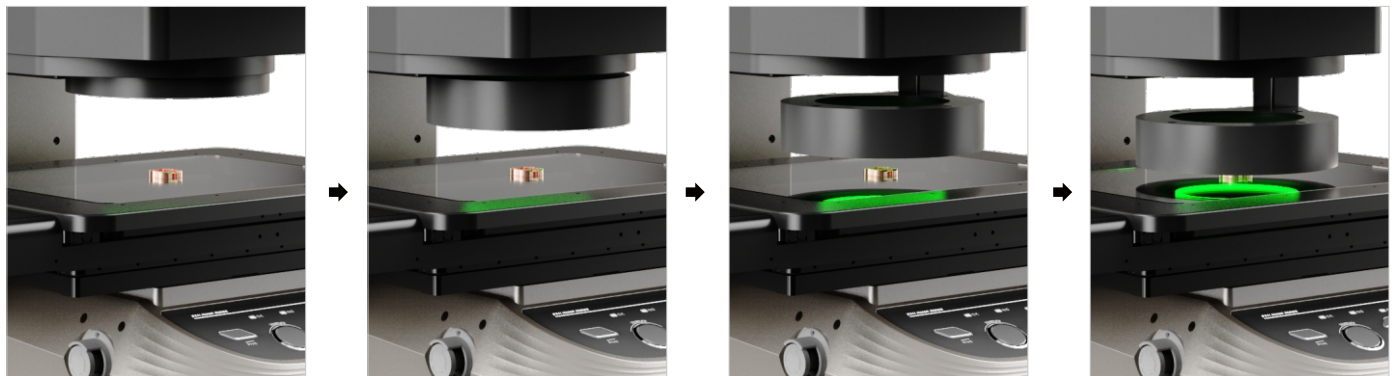
### ■ Superior Edge-grabbing Algorithms

When the measurement position contains burrs or defects, it is also possible to exclude them from the fitting process as anomalies on top of the automatic recognition.



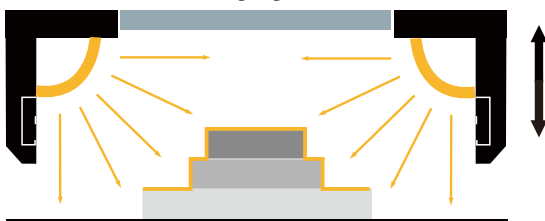
### ■ Adjustable Light Source Group

Combination of multiple variable adjustable lighting units, through the built-in brightness sensor for different ambient light, adjust the height, brightness and angle of the system light source to achieve the best visual effect, accurate physical object edge.



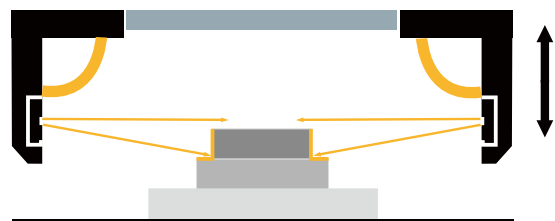
### ■ Principle Of Variable Lighting Units

Cross-sectional area when illuminated by a multi-angle light source



Illuminated over a wide area, the overall light is even when placed in a higher position, and as the position is lowered, there is a contrast between light and dark due to the difference in height.

Cross-sectional area when illuminated by slit ring lighting



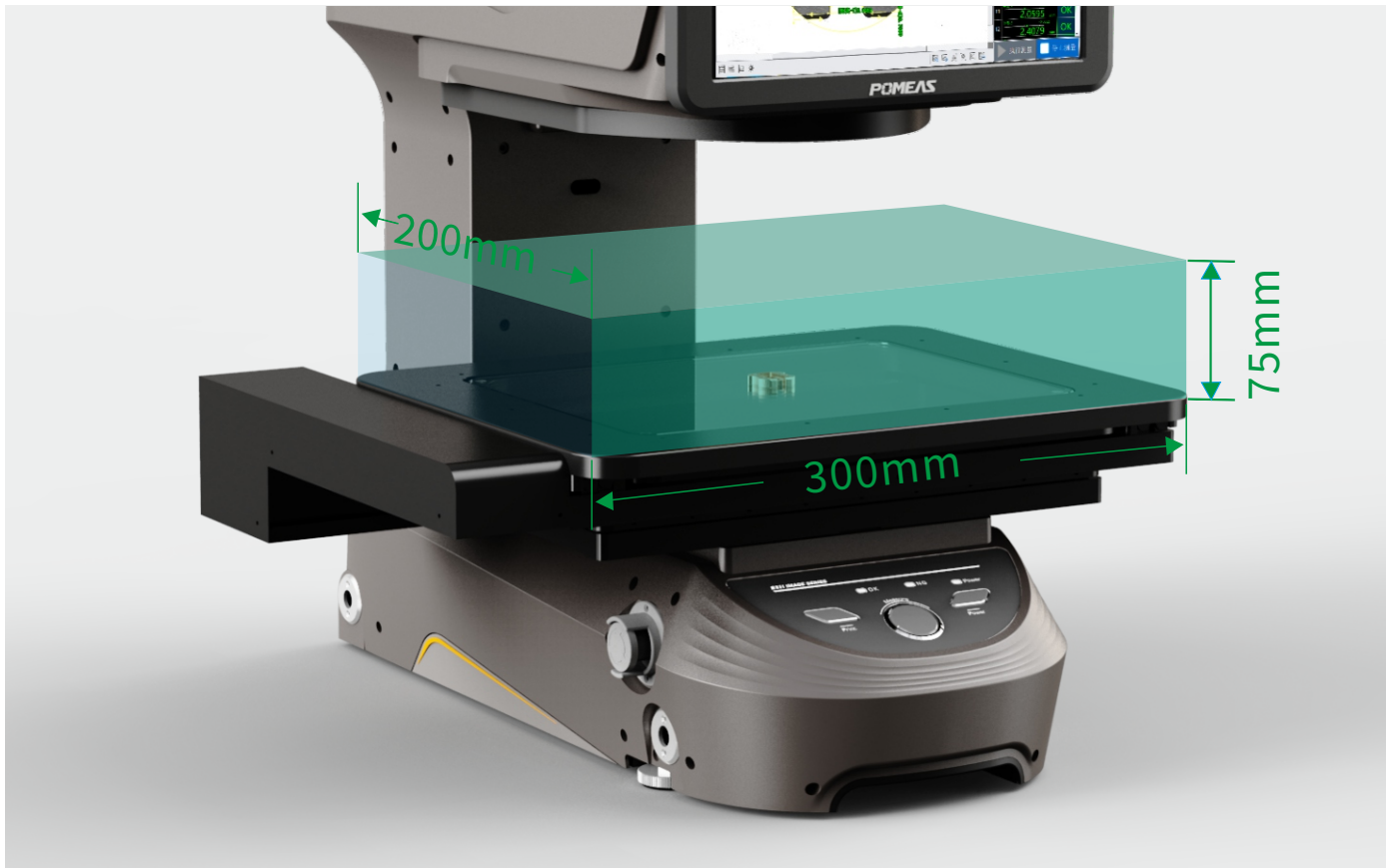
A fine-band beam is directed horizontally, and by placing the illumination unit at a certain height on the edge to be detected, a sharp contrast can be created at the target location.

## Technologies For Realizing High-precision Measurements

### High-speed Measurement And Low Vibration Large-scale Coordinate Table

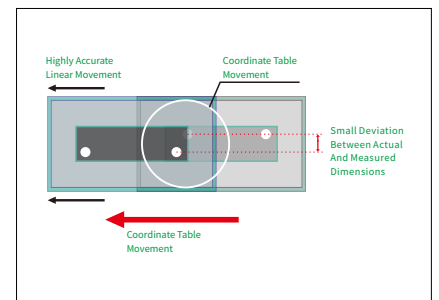
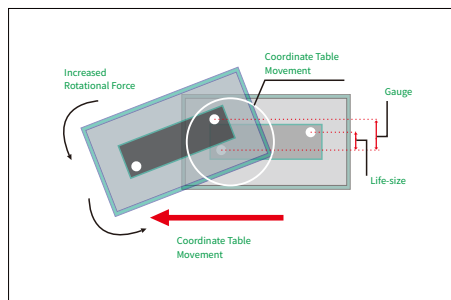
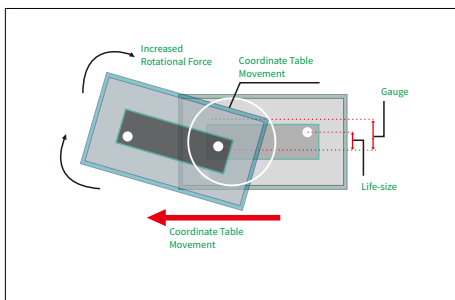
#### ■ High-speed Measurement Of A 300mm × 200mm Measuring Field At 2x\* The Speed Of Conventional Models.

The maximum size of the target that can be measured is 300 mm × 200 mm and a height of 75 mm, and a new design that reduces the resistance of the motor and feed screw to the limit reduces the travel distance, realizing high-speed, stable measurement without the need to fix the target.



#### ■ High-precision Coordinate Table With Excellent Linearity

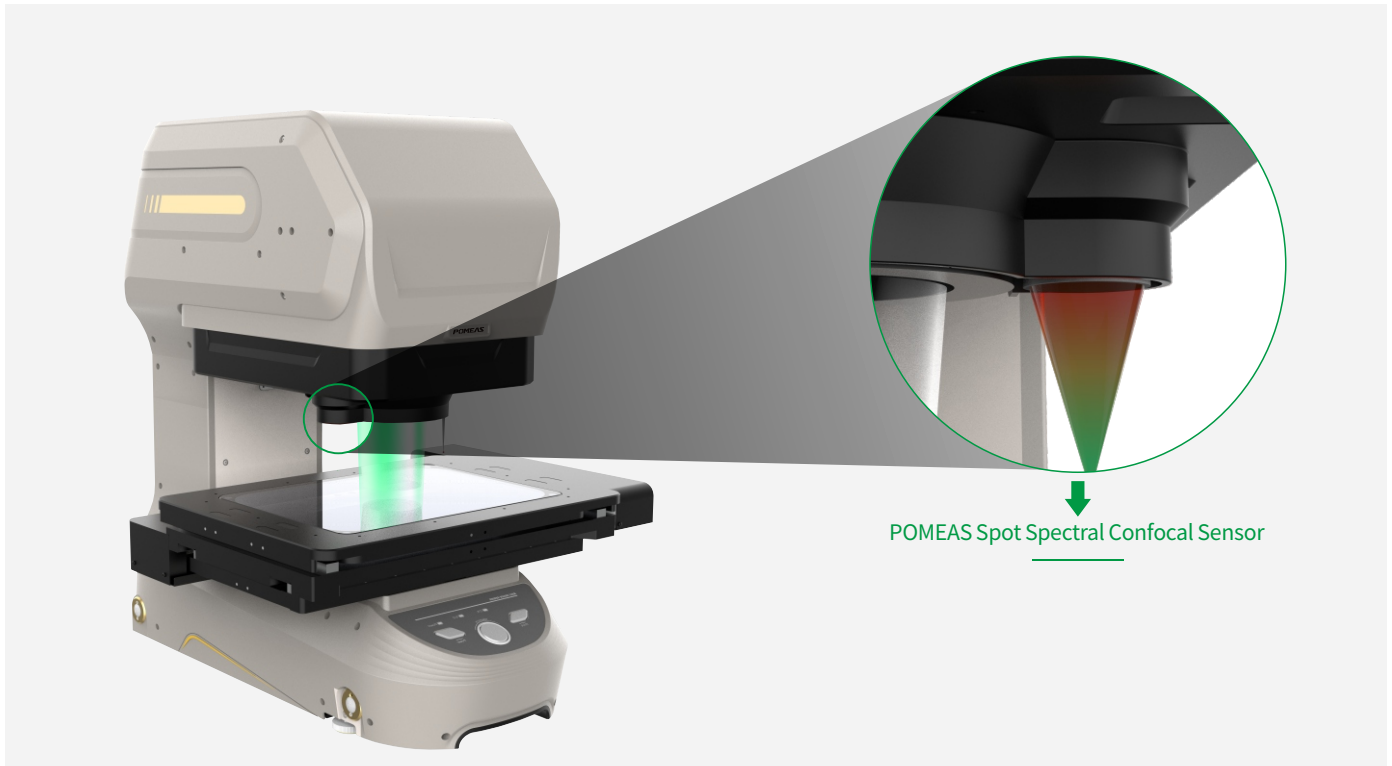
By adjusting the movement of the crossed roller guide in  $\mu\text{m}$  steps, excellent straightness is realized and errors due to movement of the coordinate table are eliminated.



## Technologies For Realizing High-precision Measurements

### XYZ Coordinate Measurement

#### Point Spectral Confocal Sensor



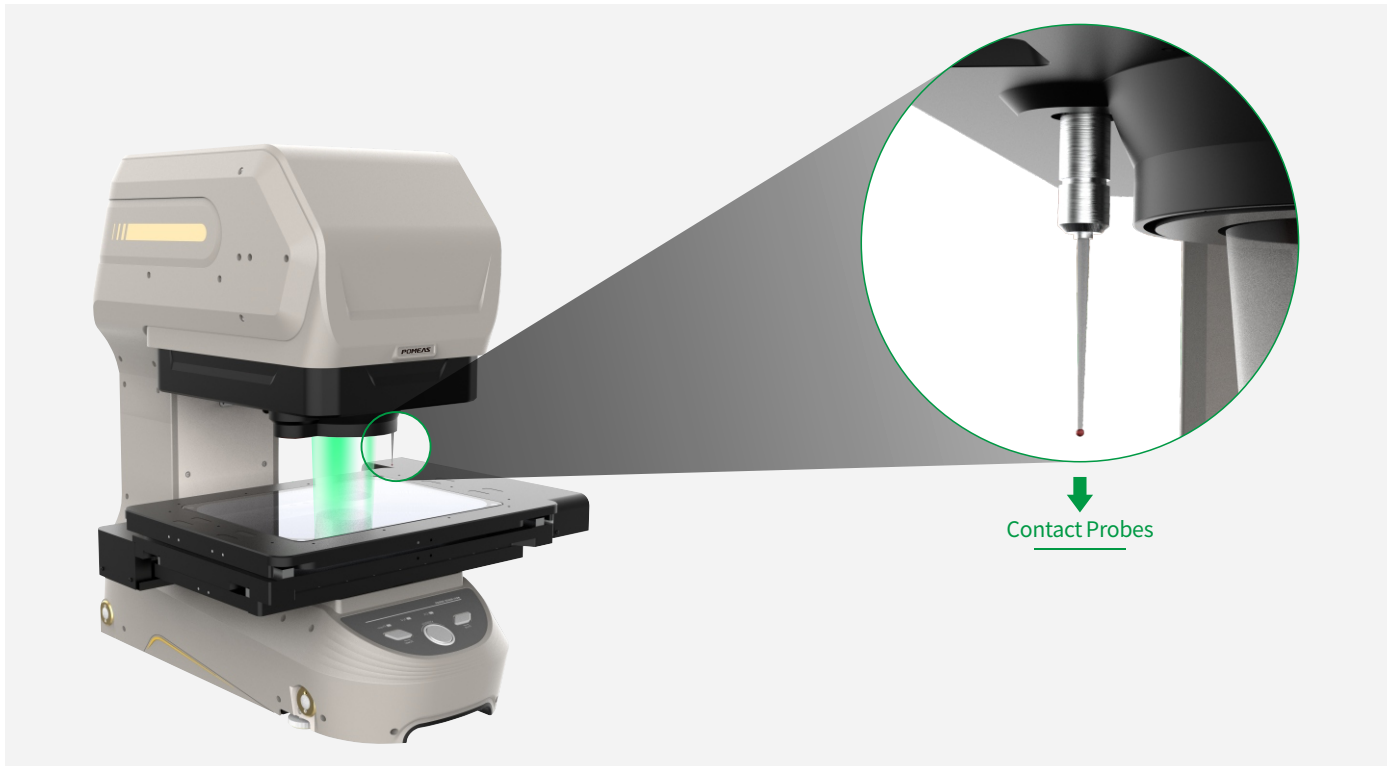
#### ■ Point Spectrum Confocal Sensor Solves Height Measurement Challenges

Speedy	Conventional models with autofocus have long scanning times when focusing, whereas point spectrum confocal sensors complete measurements instantly.
Highly Accurate	The optical unit is equipped with various components such as a light source, and only the lens is retained inside the measuring head, realizing high-precision measurements that are not affected by factors such as heat generation and electromagnetic interference.
Suitable For Various Materials	The optical unit is equipped with various components such as a light source, and only the lens is retained inside the measuring head, realizing high-precision measurements that are not affected by factors such as heat generation and electromagnetic interference.

## Technologies For Realizing High-precision Measurements

### XYZ Coordinate Measurement

#### Contact Probes

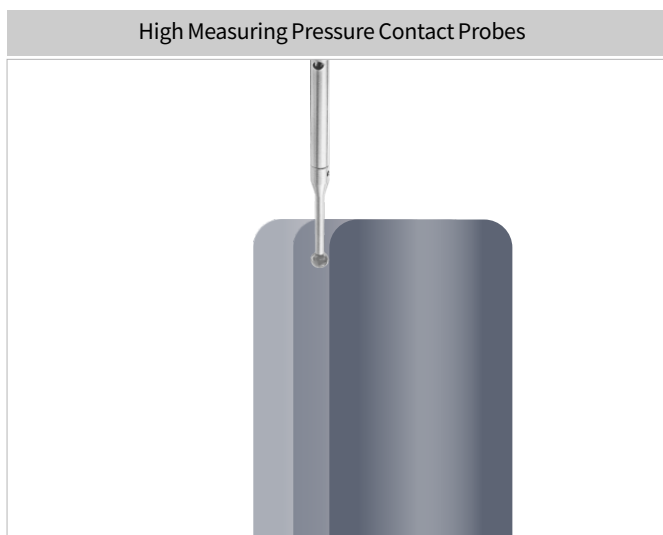


#### ■ Correctly Measure Tops, Sides, And Slopes

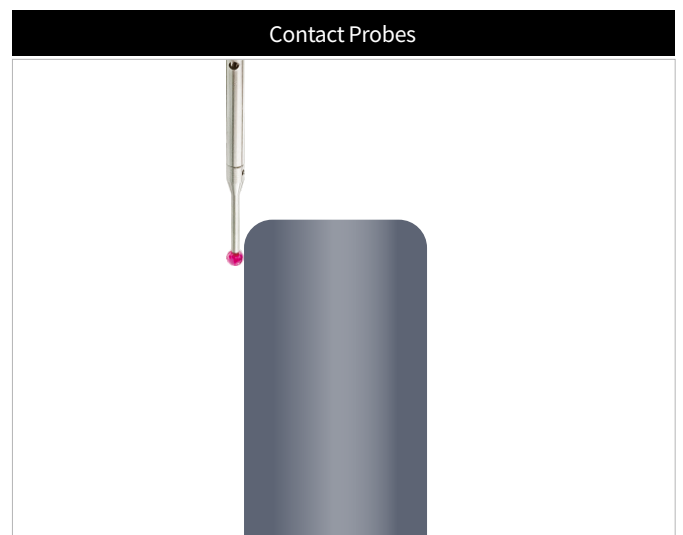
For parts with high measurement accuracy, you can choose an image measuring machine with an addable probe that is used to acquire elements (points or surfaces) and then calculate the height in the software.

#### ■ Measurement Of Small, Lightweight Targets Without Fixtures

The measuring pressure of many contact measuring instruments is too strong, resulting in small, lightweight targets that may be off-center, thus requiring the use of fixtures to hold the target in place. By using a contact-type ultra-small measuring pressure, the time and cost required to secure the target with a fixture is therefore saved, and measurements can be performed accurately. In addition, there is no risk of deformation of soft targets.



Stress-induced Target Movement

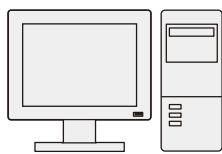


Can Be Detected Without Affecting The Target

## Network Functions And Software

### Measurement Setting Software

You can add or change the measurement position of the data produced by image dimension measurement system: using a computer at your side. Settings can be changed even when you are not in the vicinity of the equipment, and setting instructions can be corrected or measurement results can be printed from a distance when operating at home; or remotely.



Computer Server



Setup File

### Transferring Data Over A LAN Connection

A LAN connection makes it easy to transfer setup files created on a computer or a image dimension measurement system to a remote image dimension measurement system.



### Data Transmission Software



The results measured by the image dimension measurement system can be automatically transferred to the specified cell of the table calculation software on the specified computer. If the inspection table has a fixed format, measurement data can also be imported in its format.

#### Computer Software Usage Environment

Supported OS	Windows 10 Home/Pro/Enterprise (64-bit)
Hard Drive Free Space	30 Gb or more

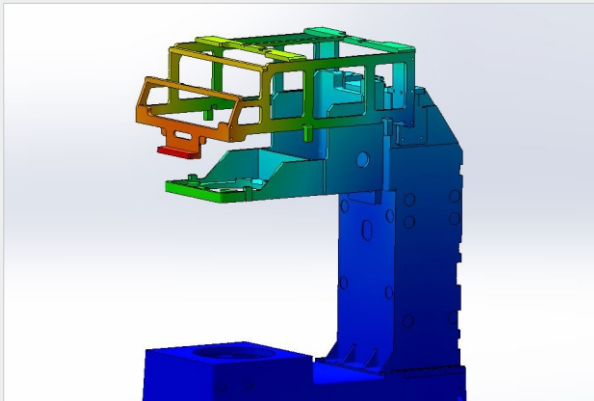
- Windows is a registered trademark or trademark of Microsoft Corporation in the United States and other countries.
- The official name of Windows is Windows® operating system.

## Performance And Reliability



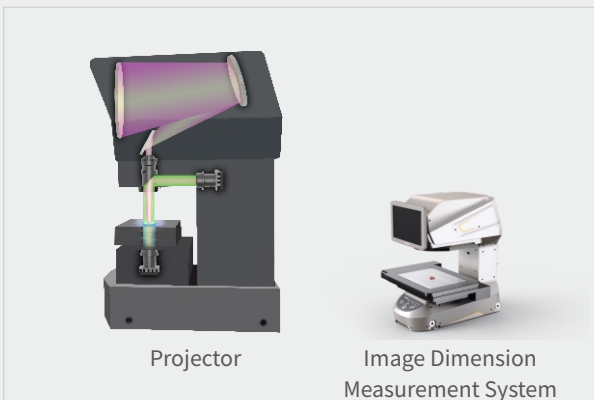
### Calibration Certificates & Certificates Of Approval

Performs tests and calibrations and factory calibration certificates. After purchasing this equipment, we are able to perform the same calibration and adjustment operations and deliver the calibration and certificates.



### Highly Rigid Body

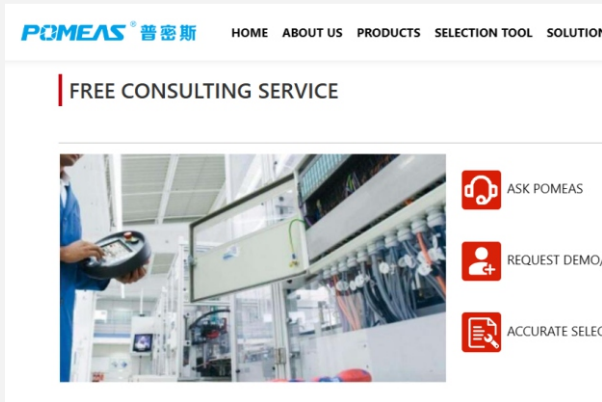
Adoption of a highly rigid body makes it is easy to change the installation place. The design is optimised by topological analysis and strength analysis, and strength analysis, making it possible to increase productivity.



### Space-Saving Design For Desktop Architecture

The integrated design of the monitor and the main unit have dramatically reduced the space required for installation, making it possible to install the measuring instrument at the place where you wish to measure. On the other hand, the monitor size has become larger, and the screen is easier to observe.

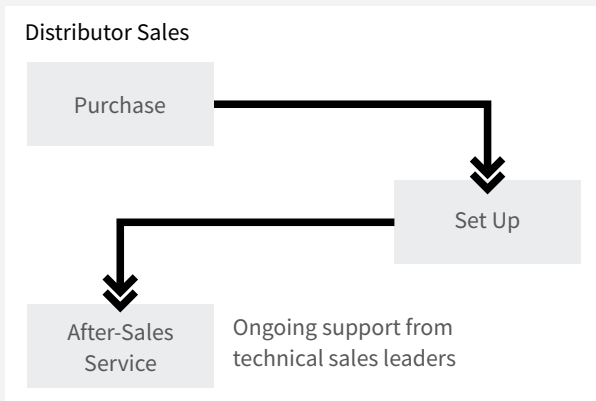
## Reliable Supporting System



### Free Upgrade To The New Version

Upgrades to new versions of the software can be obtained by contacting us.

## Well-Established Overseas Service And Support System



### Overseas Dealer System

There is a well-established dealer system to provide after-sales service, covering technical support, warranty support, repair and maintenance services, training and education. Distributors act as a bridge between the customer and the manufacturer, maintaining a high standard of after-sales service, enhancing customer satisfaction and establishing brand loyalty.

### Multi-Language Support

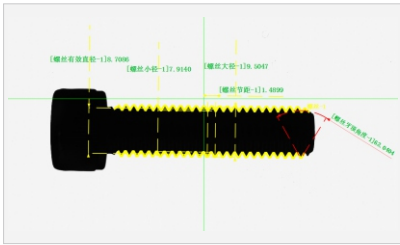
Simplified Chinese	Traditional Chinese	English
German	French	Russian
Spanish	Japanese	Korean

### Multi-Language Support

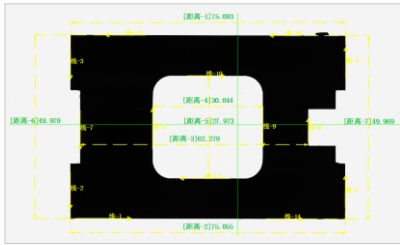
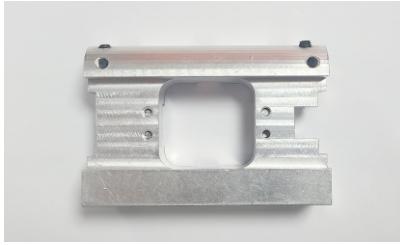
Multi-language software interfaces, marketing materials and instructions for use to support localised services to meet global market demands.

# Application

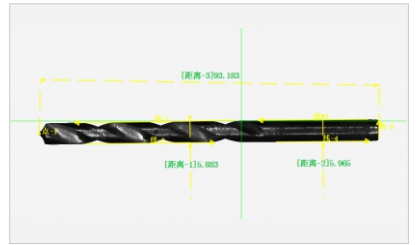
Screws, Bolts



Machined Parts



Tool



Suitable For  
Various Inspection  
Processes

Initial Sample  
Inspection

In-Process  
Sampling  
Inspection

Inspection  
Before Shipment

Warehousing  
Inspection

Automatic Size  
Measurement On  
Production Line

Automatic Size Measurement Next  
To The Production Line

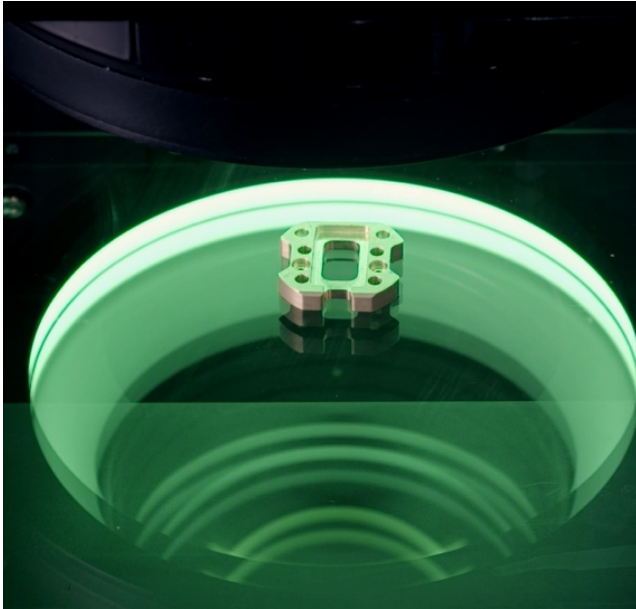
High-Precision Measurement  
In The Laboratory

## IMAGE 3 SERIES Application

### Suitable For Various Inspection Processes

---

#### Initial Sample Inspection



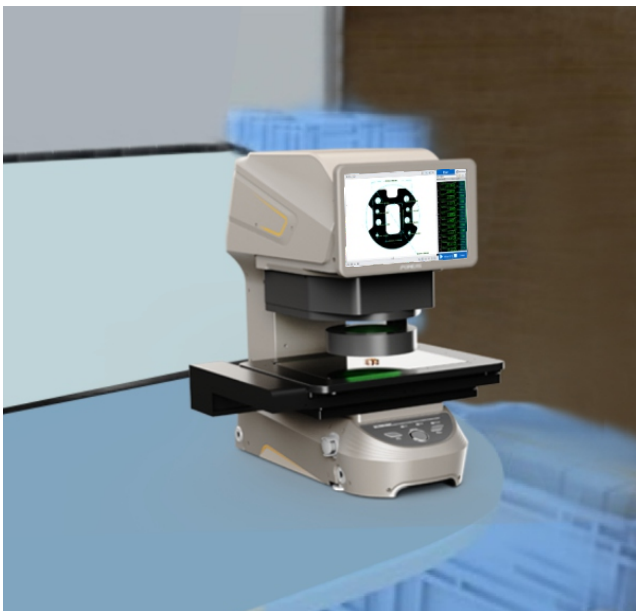
- Increased productivity through shorter installation times.
- No reliance on inspectors' experience.
- Measurements based on national (international) standards for traceability.

#### In-Process Sampling Inspection



- Increased equipment availability through reduced lead times.
- Improvement of yield by increasing the precision of equipment adjustment.
- Aura management within the process.

#### Inspection Before Shipment



- Shipment inspection is possible for products with short lead times.
- Reduction in man-hours required to produce test result forms.
- Reduced time and labour costs for training inspectors.

#### Warehousing Inspection

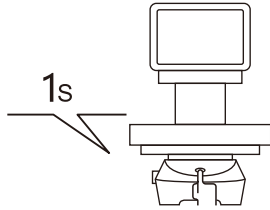


- Manage incoming inspections of multi-variety products according to prescribed standards.
- Increasing the number of check N's reduces the risk of adverse occurrences.
- Improve quality by measuring unchecked areas.

## Suitable For Various Inspection Processes

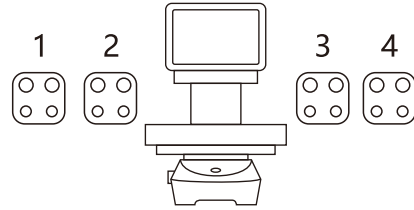
---

### Reduced Measurement Time



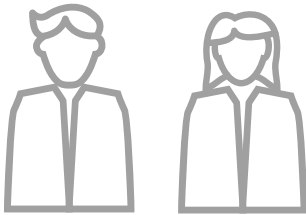
Increase productivity and reduce costs by reducing inspection time.

### Increase In The Number Of Checks



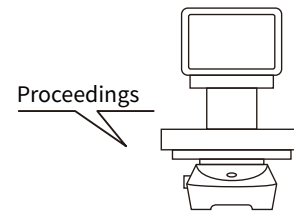
May increase the number of examined, thereby reducing the risk of adverse occurrences.

### Can Be Tested By Non-Testing Personnel



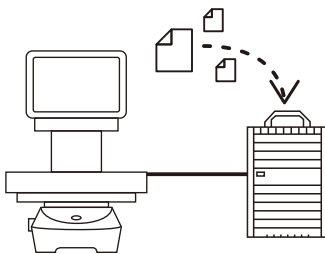
Increase equipment availability by reducing the burden on the quality department.

### Standardise Of Inspection



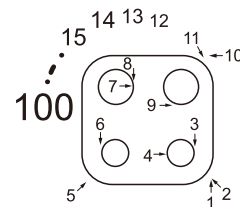
Inspection criteria can be standardised to ensure consistent quality.

### Reduces The Time Required To Record Measurement Data



Cut data management costs by reducing the time required to record inspection data. costs.

### Increase In The Number Of Measuring Parts



Unchecked areas can be measured without increasing the number of measuring man-hours, thus effectively improving quality. and effectively improve quality.

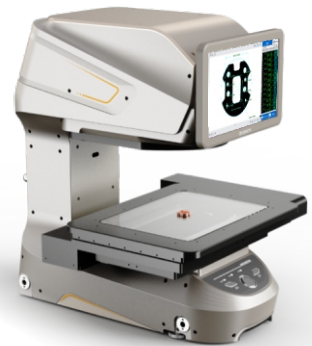
## System Configuration



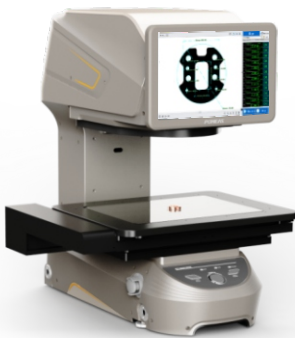
**PMS-C1**  
Vision Controller



**IMAGE 3**  
φ100mm Platform Equipped With  
Variable Lighting Units



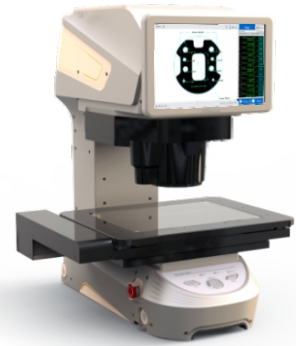
**IMAGE 3 PLUS**  
200mm×200mm Platform Equipped  
With Variable Lighting Units



**IMAGE 3 PRO**  
300mm×200mm Platform Equipped  
With Variable Lighting Units



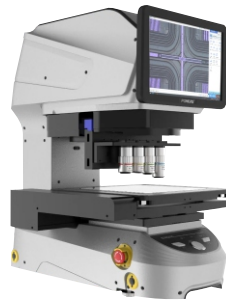
**IMAGE 3 PRO-H**  
300mm×200mm Platform Equipped With  
Variable Lighting Unit And 8055 Point Spectrum



**IMAGE 3 MAX**  
300mm×200mm  
High-precision Dual-magnification Image  
Acquisition System  
Platform Equipped With Variable  
Lighting Unit And 8055 Point Spectrum



**IMAGE 3 MAX2**  
Wide Field Of View Measuring Range  
225\*125\*75mm Equipped  
With Promise 8055 Spectral Probe



**Digital Microscope System MICRO**  
**IMAGE 3**  
Measuring Range 100mm\*100mm\*30mm

## List Of Options

Exterior  
Lighting



**IMAGE-GCOL30**  
**IMAGE 3**  
External Coaxial  
Optical Group

IMAGE Rapid Measurement  
System Measurement Software

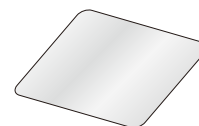


**Profile**  
**Comparison Module**  
Multi-sensor measuring  
systems Met X software

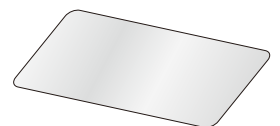
Stage Glass



**IMAGE-G100**  
φ113.6\*6mm  
Version A  
Stage Glass



**IMAGE-G200**  
220.5\*237.5\*8mm  
Version B  
Stage Glass



**IMAGE-G300**  
320.5\*237.5\*8mm  
Version C  
Stage Glass

Product Parameters

Equipment Model		IMAGE 3	IMAGE 3 PLUS	IMAGE 3 PRO	IMAGE 3 PRO-H	IMAGE 3 MAX	IMAGE 3 MAX 2			
Imaging Measurement	Image Magnification Ratio		/				21.5-inch Display, Magnification Ratio 9.5×-39×	/		
	Measuring Range (mm)	High precision measurement mode(X*Y*Z)	18*18	118*118*75	218*118*75	218*118*75	205*104*75	206*106*75		
		Wide field of view measurement mode(X*Y*Z)	Φ100	200*200*75	300*200*75	300*200*75	223*118*75	225*125*75		
	Lens field of view (mm)	High-precision measurement mode	18×18				6.4×4.8	6×6		
		Wide field of view measurement mode	Φ100				18.8×14.1	25×25		
	Repeat Accuracy (μm)	High-precision measurement mode	±0.5				±0.25	±0.25		
		Wide field of view measurement mode	±1				±0.5	±0.5		
	Measurement accuracy (μm)	High-precision measurement mode	Connectionless	±2 <sup>4</sup>				±1	±1* <sup>2</sup>	
			Connected	/	±(2+0.02L)* <sup>3</sup>	±(2+0.02L)* <sup>4</sup>		±(1.5+0.02L)* <sup>5</sup>		
		Wide field of view measurement mode	Connectionless	±4* <sup>6</sup>				±1.5* <sup>7</sup>		
Connected			/	±(4+0.02L)* <sup>8</sup>	±(4+0.02L)* <sup>9</sup>		±(2+0.02L)* <sup>10</sup>			
Height measurement	Repeatability (μm)		/			±2				
	Measurement Accuracy (μm)					±(3.5+L/50)* <sup>11</sup>				
	Working Distance(mm)					55				
	Range (mm)					±3				
Optical System	At The Opportune Moment		1" 20 Megapixel B/W CMOS Camera*2			1" 12-megapixel black-and-white CMOS camera				
	Camera Shot		Double-magnification bilateral telecentric lens			High-precision dual-magnification image acquisition system	Double-magnification bilateral telecentric lens			
	Matte		Liftable quad white ring light+green gap light source							
	Silhouette Light		Green parallel bottom light source							
	Coaxial Optical		Built-in coaxial light source (optional)			Built-in coaxial light source				
Height sensors	Spectral Confocal Probes		/			8055		8055(optional)		
	Spectral Measurement Range (mm)					145×95×75	122×100×75	135×100×75		
	Mirror Measurement Angle					±13.6°				
	Spot Size (μm)					17				
	Linear Accuracy					0.02%F.S.				
Table load(kg)		5								
measurement system		AI-Image (self-developed)								
Supply Power Supply		220V+20%, 50Hz								
working environment		Temperature: 20±3°C; Humidity: 30-80% (no condensation); Vibration: <0.002g 15Hz								
Minimum display unit (μm)		0.1								
Instrument weight (kg)		33	45	50	45	33	45			
Overall Dimension(L*W*H)(mm)		625*309*650	625*402*650	625*510*650	625*510*650	625*510*695	625*510*650			

Note

① in the focus position, the use of ambient temperature 20 ± 1 °C;

② Coordinate table load 2Kg or less, L is the amount of movement of the coordinate table;

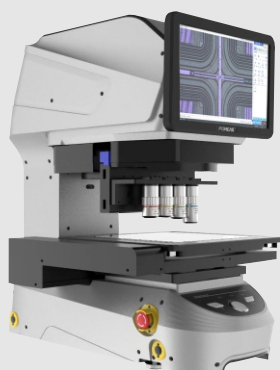
③ The accuracy verification without connection mode uses optical calibration sheet, and the accuracy verification with connection mode uses line pattern ruler.

\*1 Within the range of 20mm×14mm; \*2 Within the range of 5mm×5mm; \*3 Within the range of 113mm×105mm; \*4 Within the range of 200mm×105mm;

\*5 Within the range of 185mm×95mm; \*6 Within the range of Φ80mm; \*7 Within the range of 20mm×20mm; \*8 Within the range of 180mm×180mm;

\*9 Within the range of 270mm×180mm; \*10 Within the range of 200mm×200mm; \*11 Zeroing of spectral focus position, L is Z-axis travel stroke, L≤75mm;

## Specification



### Digital Microscope System MICRO IMAGE 3

- One device for all analytical needs
- All-in-one design

**Product Parameter Table**

Products	Digital Magnification	1×~8000×
	Objective Lens Magnification Range	1×~150×
	Maximum Working Distance	22mm
	Ams Functions	Auto Measurement System Function
Integrated Control System		Pms 5-axis Control System
High Precision Frames	Z-axis Autofocus Distance	30mm
	Z-axis Maximum Resolution	0.1μm
	Z-axis expandable maximum height	75mm
	Environmental Temperature	10°C To 40°C (non-condensing)
	Relative Humidity	Less Than 80% (no Condensation)
	Dimensions (mm)/weight	273(w) × 467.1(h) × 444(d) / 8kg
Digital System	Visible Light Camera Unit 1	1-inch 20-megapixel Image Sensor
	Shutter Mode	Roll-up Shutter
	Visible Light Camera Unit 2	2/3-inch 5-megapixel Image Sensor
	Shutter Mode	Global Shutter
	Infrared Light Camera Unit 1	1.25-inch 4-megapixel Image Sensor
	Shutter Mode	Roll-up Shutter
Motorized Z-axis	Infrared Light Camera Unit 2	1/1.4-inch 5-megapixel Ingaas Image Sensor
	Course (of History)	30mm
	Resolution (of A Photo)	0.1mm
	Repeatability	1μm
Dimensions(mm)/weight		Module: 60(w) × 158(h) × 42(d) / 1.6kg
Motorized Control Platforms	2d Image Stitching	
	3d Image Stitching	
	Course (of History)	100(x) × 100(y) mm Standard
	Driving Method	Electric Powered
	Corresponding Product Size	4 Inch, 6 Inch, 8 Inch, 12 Inch
	3d Display Function	
Manual Control Platform	3d Contour Correction Function	
	Driving Method	Manually Operated
	Sizes	8 Inch
Lighting Sources	Course (of History)	104(x) × 102(y) mm
	Led	5v 1a High Brightness Led
	Led Lifetime	Greater Than 20,000 Hours
	Color Temperature	5650k

# DIMENSIONS

IMAGE3

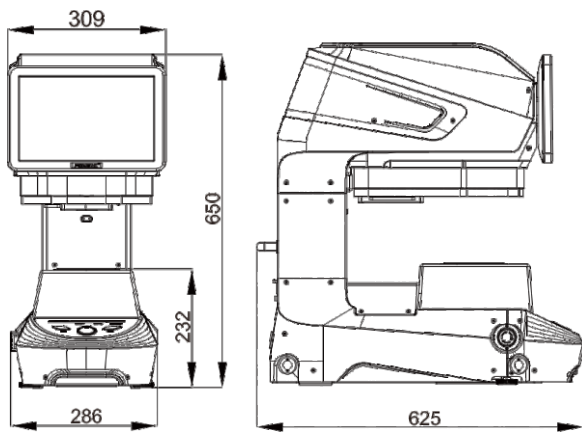


IMAGE3 PLUS

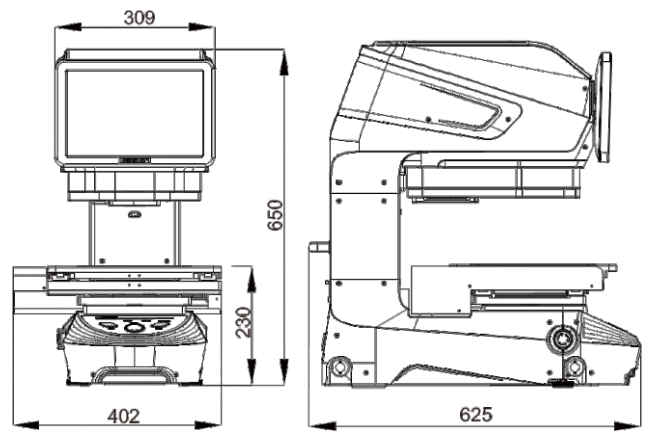


IMAGE3 PRO

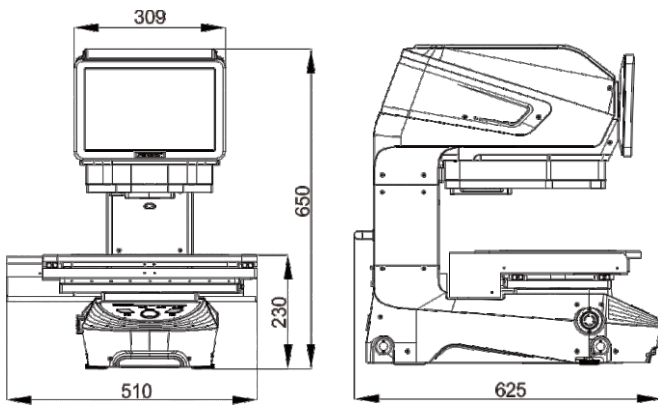


IMAGE3 PRO-H

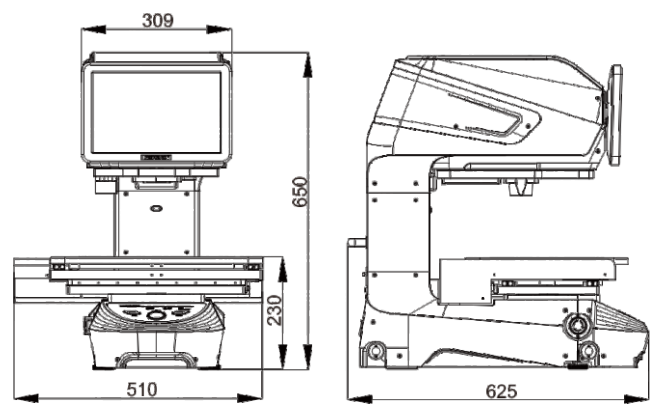


IMAGE3 MAX

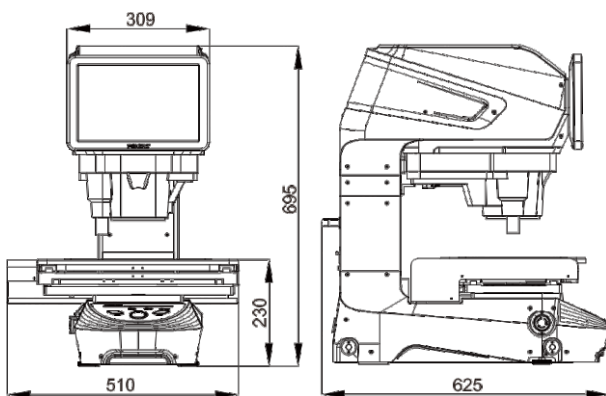
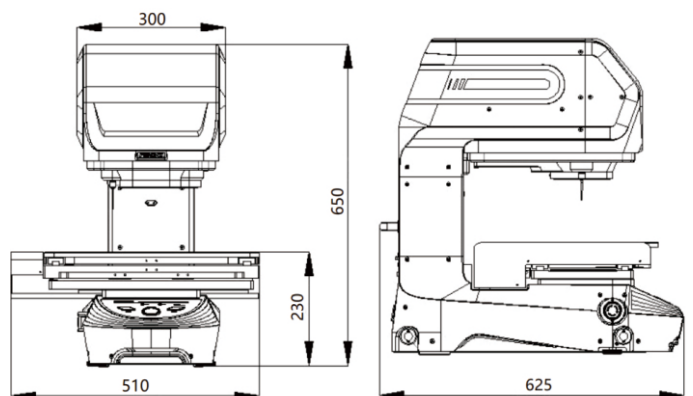


IMAGE3 MAX2

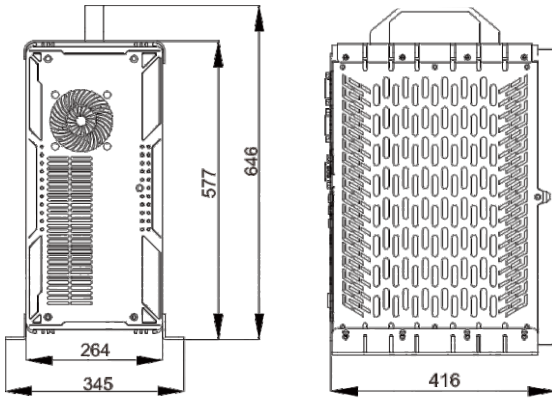


## DIMENSIONS

---

C1/C2

---



**T.86-769-2266 0867    F.86-769-2266 0857    E.markering@pomeas.com**  
Add: No.68,Chongwei Road,Baizhoubian,East district,Dongguan,China,523000  
Add: Building 15#, CIMC Park,High And NewTechnology Industries  
Development Area,Songshan Lake, Dongguan  
**www.pomeas.cn    www.pomeas.com**