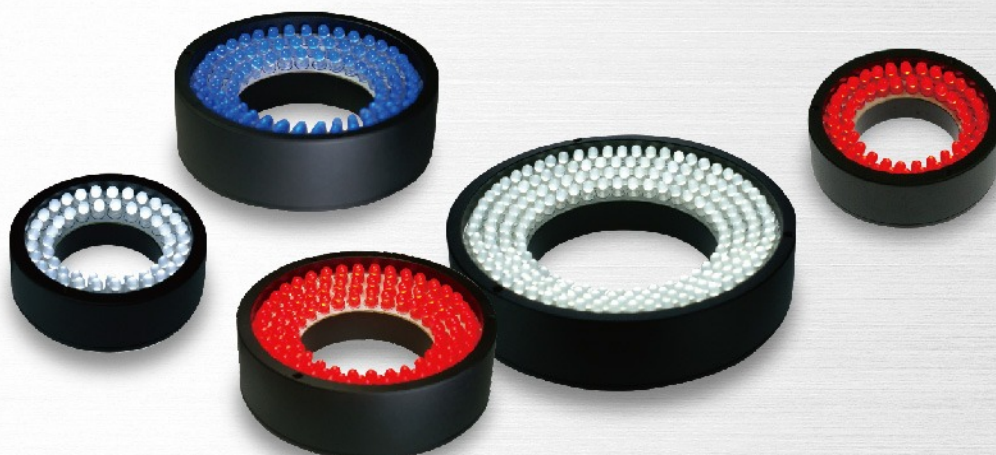


**NEW**

# Ring Lights ( 0°, 15°, 30° )



## Outline

Different angles solve uneven shape and dark corners problems.

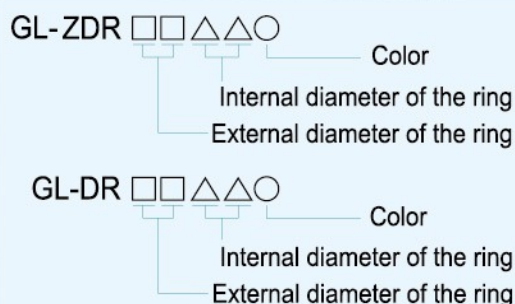
## Feature

1. Lights are designed in 0°, 15°, and 30°.
2. Clear image recognition for position change and uneven surfaces.
3. Diffusion plates are available. (P91)

## Major applications

1. Positioning for substrates and printed boards, inspection for chip components
2. Liquid crystal adjustment, plastic container inspection
3. IC impress inspection, such as label inspection

## Model explanation



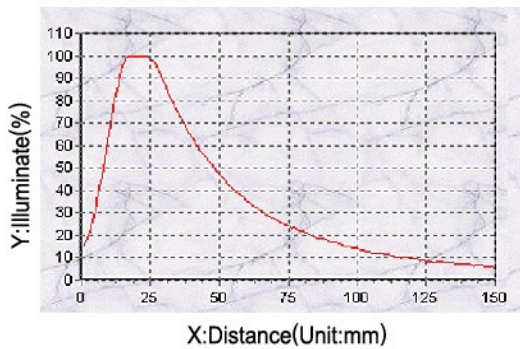
## Available Models

Model	Angle	Color	Power Consumption	Weight (g)	Dimension
GL-ZDR3210R-24	15°	●	24V/0.96W		
GL-ZDR3210W/B/G-24	15°	○ ● ●	24V/1.44W	24	1
GL-ZDR3210IR-24	15°	●	24V/0.96W		
GL-ZDR4218R-24	0°	●	24V/1.44W		
GL-ZDR4218W/B/G-24	0°	○ ● ●	24V/2.4W	37	2
GL-ZDR4218IR-24	0°	●	24V/1.44W		
<b>NEW</b> GL-ZDR5025R-24	0°	●	24V/1.92W		
<b>NEW</b> GL-ZDR5025W/G/B-24	0°	○ ● ●	24V/2.88W	46	3
<b>NEW</b> GL-ZDR5025IR-24	0°	●	24V/1.92W		
GL-DR3210R-24	30°	●	24V/1.0W		
GL-DR3210W/B/G-24	30°	○ ● ●	24V/1.5W	24	4
GL-DR3210IR-24	30°	●	24V/1.0W		
GL-DR4218R-24	30°	●	24V/1.5W		
GL-DR4218W/B/G-24	30°	○ ● ●	24V/2.4W	36	5
GL-DR4218IR-24	30°	●	24V/1.5W		
GL-DR5028R-24	30°	●	24V/2.0W		
GL-DR5028W/B/G-24	30°	○ ● ●	24V/3.4W	45	6
GL-DR5028IR-24	30°	●	24V/2.0W		
GL-DR5028IR940-24	30°	●	24V/1.92W		
GL-DR6736R-24	30°	●	24V/3.9W		
GL-DR6736W/B/G-24	30°	○ ● ●	24V/5.8W	83	7
GL-DR6736IR-24	30°	●	24V/3.9W		
GL-DR9050R-24	30°	●	24V/7.7W		
GL-DR9050W/B/G-24	30°	○ ● ●	24V/11.6W	138	8
GL-DR9050IR-24	30°	●	24V/7.7W		
GL-DR12060R-24	30°	●	24V/17.8W		
GL-DR12060W/B/G-24	30°	○ ● ●	24V/26.9W	418	9
GL-DR12060IR-24	30°	●	24V/17.8W		

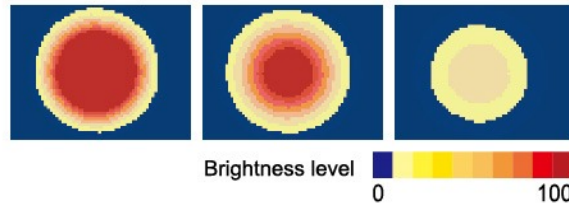
Model	Angle	Color	Power Consumption	Weight (g)	Dimension
GL-DR16595W-24	30°	○	24V/24.48W	616	10
GL-DR7035R-24	0°	●	24V/4.4W		
GL-DR7035W/B/G-24	0°	○ ● ●	24V/6.8W	97	11
GL-DR7035IR-24	0°	●	24V/4.4W		
GL-DR9550R-24	0°	●	24V/5.38W		
GL-DR9550W/B/G-24	0°	○ ● ●	24V/8.06W	165	12
GL-DR9550IR-24	0°	●	24V/5.38W		

## Luminous intensity distribution characteristics

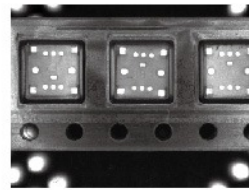
GL-DR6736R Graph



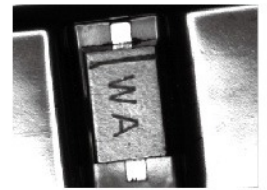
Illuminate Height:5CM,10CM,15CM



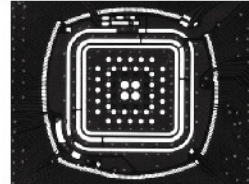
## Imaging examples



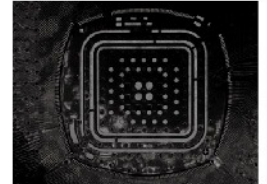
**GL-DR6736R**  
Chip Material Package



**GL-DR6736W**  
Diode Characters



**GL-DR9050W**  
Chip Close Shot



**GL-DR9050W**  
Chip Long Distance Shot

## Dimensional Diagrams(mm)

