

NEW

Ring Lights (15°)



Outline

High Intensity Light, Vibration resistant, Impact Resistant, and Special Lens. Illumination is 4 times more than general ring lights.

Feature

1. Lights are designed in 15°.
2. Far working distance can be applied.

Major applications

1. Positioning for substrates and printed boards, inspection for chip components
2. Liquid crystal adjustment, plastic container inspection
3. IC impress inspection

Model explanation

GL-DRC □□△△○

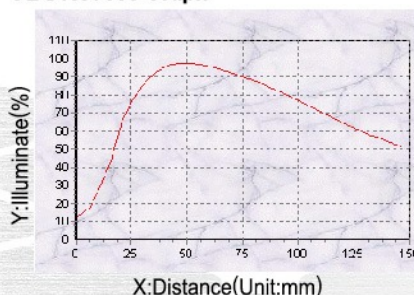
- — External diameter of the ring
- △ — Internal diameter of the ring
- — Color

Available Models

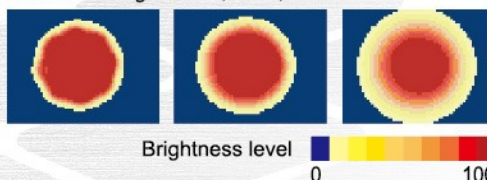
Model	Color	Power Consumption	Weight (g)	Dimension
GL-DRC5618R	●	12V/2.73W	130	1
GL-DRC5618W/B/G	○ ● ●	12V/6.33W		
GL-DRC7035R	●	12V/5.74W	212	2
GL-DRC7035W/B/G	○ ● ●	12V/9.5W		
GL-DRC9050R	●	12V/5.74W	324	3
GL-DRC9050W/B/G	○ ● ●	12V/12.67W		
NEW GL-DRC9050W/B/G-24	○ ● ●	24V/15.36W	621	4
GL-DRC12060R	●	12V/8.61W		
GL-DRC12060W/B/G	○ ● ●	12V/15.84W	148	5
GL-DRC12060W/B/G-24	○ ● ●	24V/21.43W		
GL-HDRC7035W/B/G-24	○ ● ●	24V/9.5W		

Luminous intensity distribution characteristics

GL-DRC7035 Graph



Illuminate Height: 1CM, 2CM, 5CM



Dimensional Diagrams(mm)

